

Luminaire Photograph

LED STREET LIGHT LED SL650  
FEELIGHT TECH CO., LIMITED



C Range: 0 - 360DEG  
C Interval: 5.0DEG  
Test Speed: HIGH  
Temperature: 20DEG  
Operators: XH  
Test Date: 2010-10-13

$\gamma$  Range: 0 - 90DEG  
 $\gamma$  Interval: 0.5DEG  
Test System: EVERFINE GO-2000B SYSTEM V1.0.250  
Humidity: 65%  
Test Distance: 5.360m [K=1.0000]  
Remarks: SL650-100W, 90LM/W

LUMINOUS INTENSITY DISTRIBUTION DIAGRAM

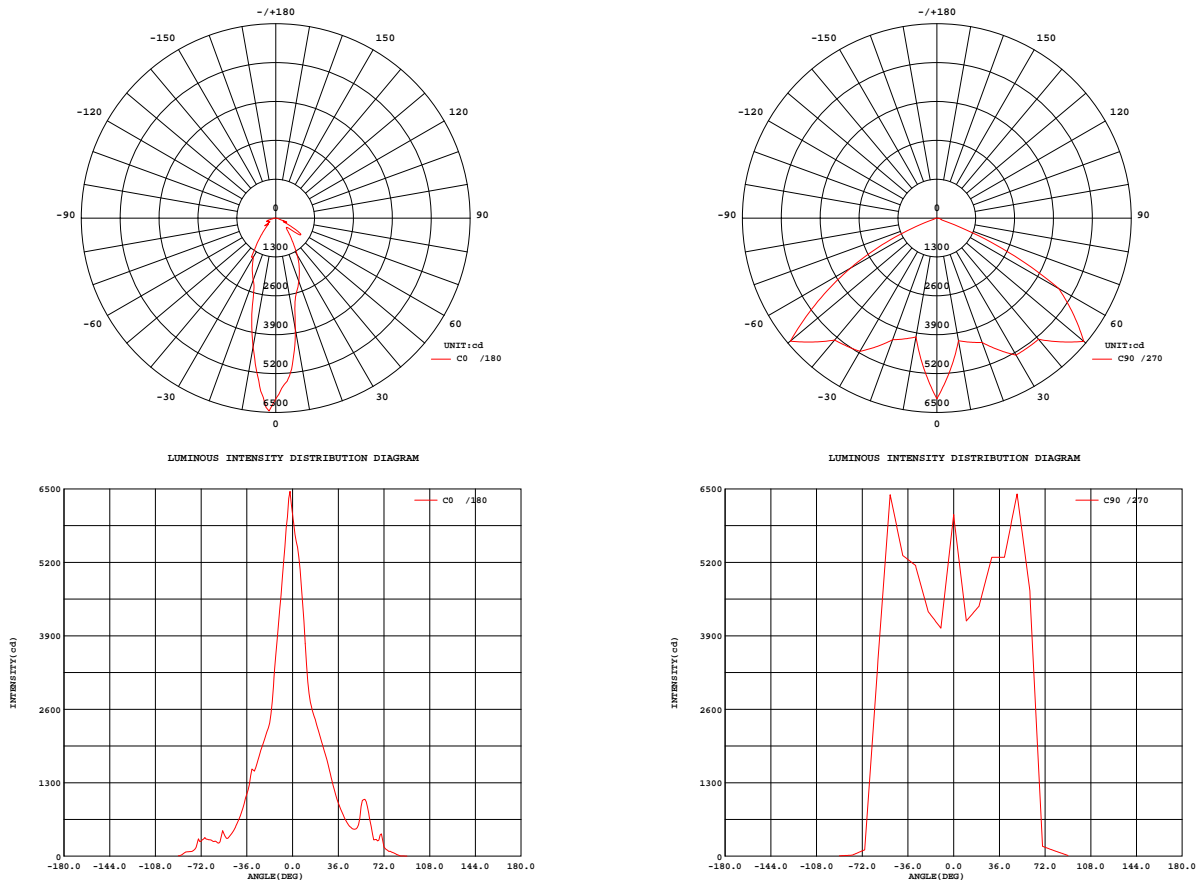


Fig. C0/C180

Fig. C90/C270

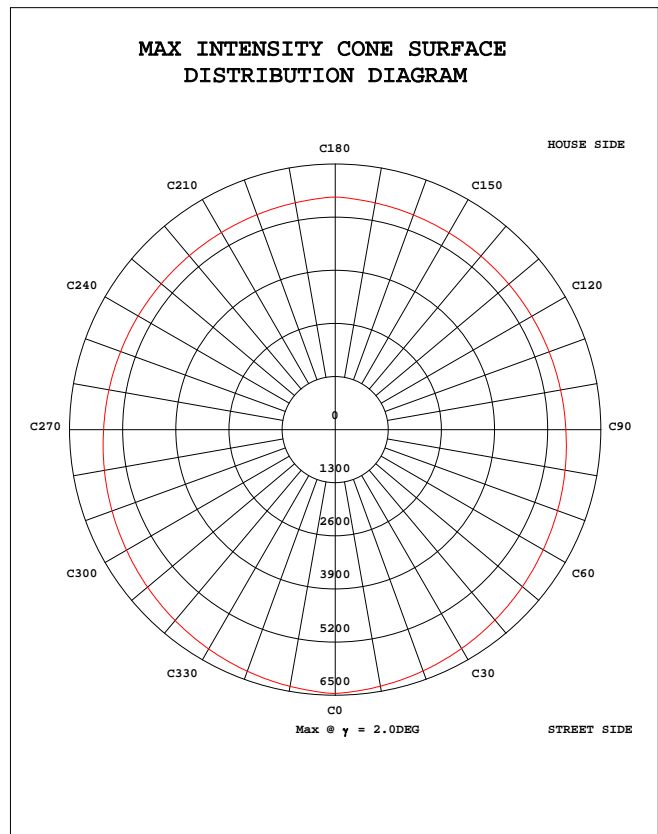
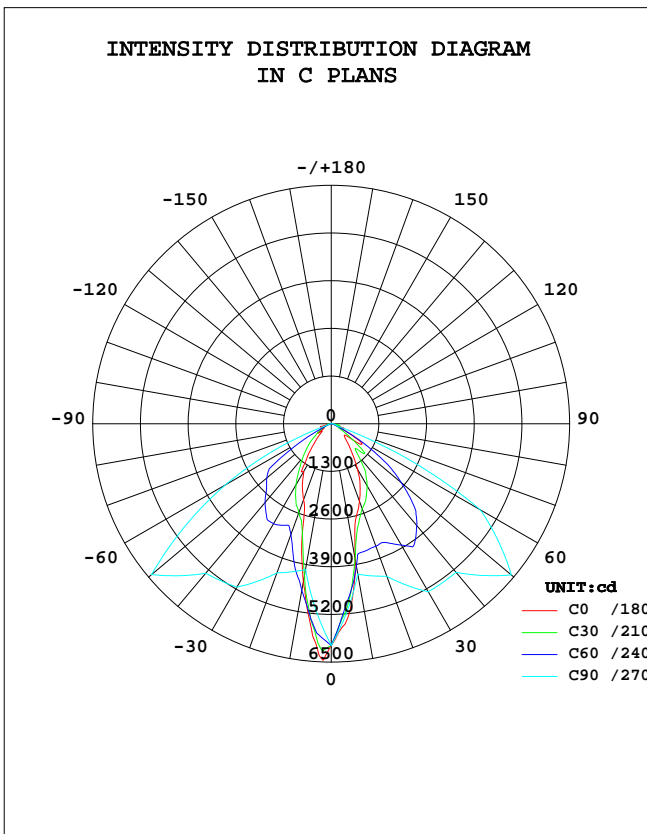
C Range: 0 - 360DEG  
 C Interval: 5.0DEG  
 Test Speed: HIGH  
 Temperature: 20DEG  
 Operators: XH  
 Test Date: 2010-10-13

$\gamma$  Range: 0 - 90DEG  
 $\gamma$  Interval: 0.5DEG  
 Test System: EVERFINE GO-2000B SYSTEM V1.0.250  
 Humidity: 65%  
 Test Distance: 5.360m [K=1.0000]  
 Remarks: SL650-100W, 90LM/W

**STREETLIGHT PHOTOMETRIC TEST REPORT**

Test:U:233.3V I:0.4770A P:81.00W PF:0.9760 Lamp Flux:6900x1 lm		
NAME: LED STREET LIGHT	TYPE:LED	WEIGHT:
DIMENSION:	SPECIFICATION:SL650	SERIAL No.:
MANUFACTURER: FEELIGHT TECH CO., LIMITED	SURFACE:	PROTECTION ANGLE:

DATA OF LAMP		PHOTOMETRIC DATA Eff: 80.28 lm/W			
MODEL	SL650-100W	I <sub>max</sub> (cd)	6455	η street_up(%)	0.0
NOMINAL POWER(W)	112	EFFICIENCY(%)	94.2	η street_down(%)	49.6
RATED VOLTAGE(V)	232	TOTAL FLUX(lm)	8482	η house_up(%)	0.0
NOMINAL FLUX(lm)	9000.0	MAXIMUM @(C,γ )	0,2.0	η house_down(%)	44.7
LAMPS INSIDE	1	η up(%)	0.0	76 FLASHAREA(m2)	0.0010
TEST VOLTAGE(V)	231.8	η down(%)	94.2	SLI	17.367



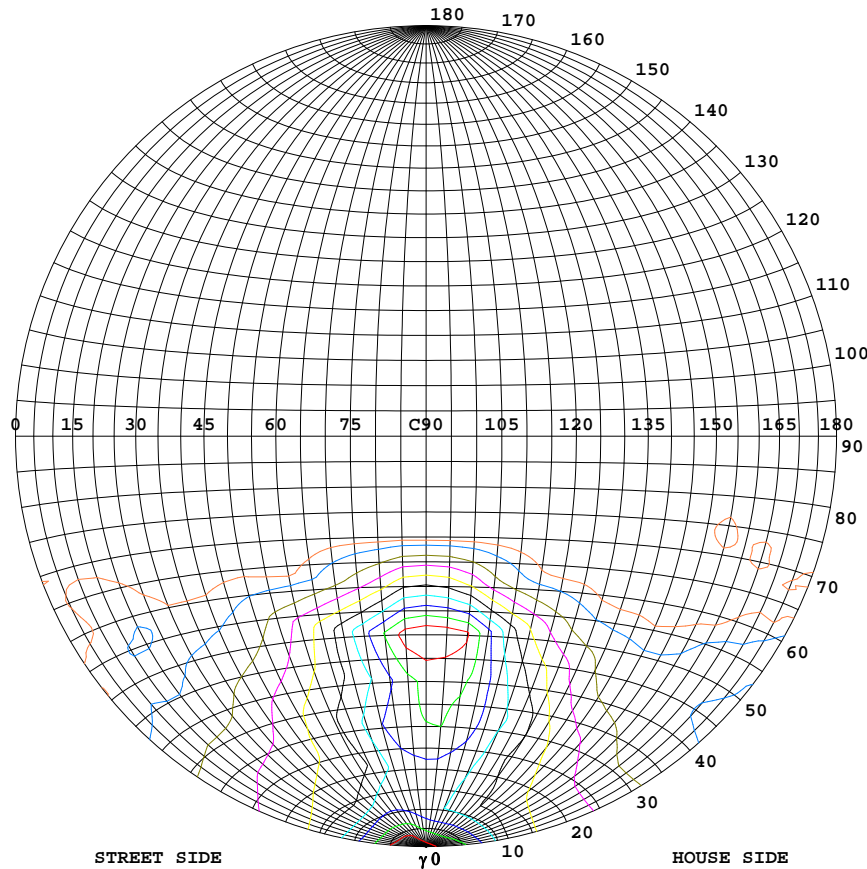
C Range: 0 - 360DEG  
 C Interval: 5.0DEG  
 Test Speed: HIGH  
 Temperature:20DEG  
 Operators:XH  
 Test Date:2010-10-13

γ Range: 0 - 90DEG  
 γ Interval: 0.5DEG  
 Test System:EVERFINE GO-2000B SYSTEM V1.0.250  
 Humidity:65%  
 Test Distance:5.360m [K=1.0000]  
 Remarks: SL650-100W, 90LM/W

Note: SLI:Specific Luminaire Index

**STREETLIGHT ISOCANDELA DIAGRAM**

Test:U:233.3V I:0.4770A P:81.00W PF:0.9760 Lamp Flux:6900x1 lm		
NAME: LED STREET LIGHT	TYPE:LED	WEIGHT:
DIMENSION:	SPECIFICATION:SL650	SERIAL No.:
MANUFACTURER: FEELIGHT TECH CO., LIMITED	SURFACE:	PROTECTION ANGLE:



**Classification:**

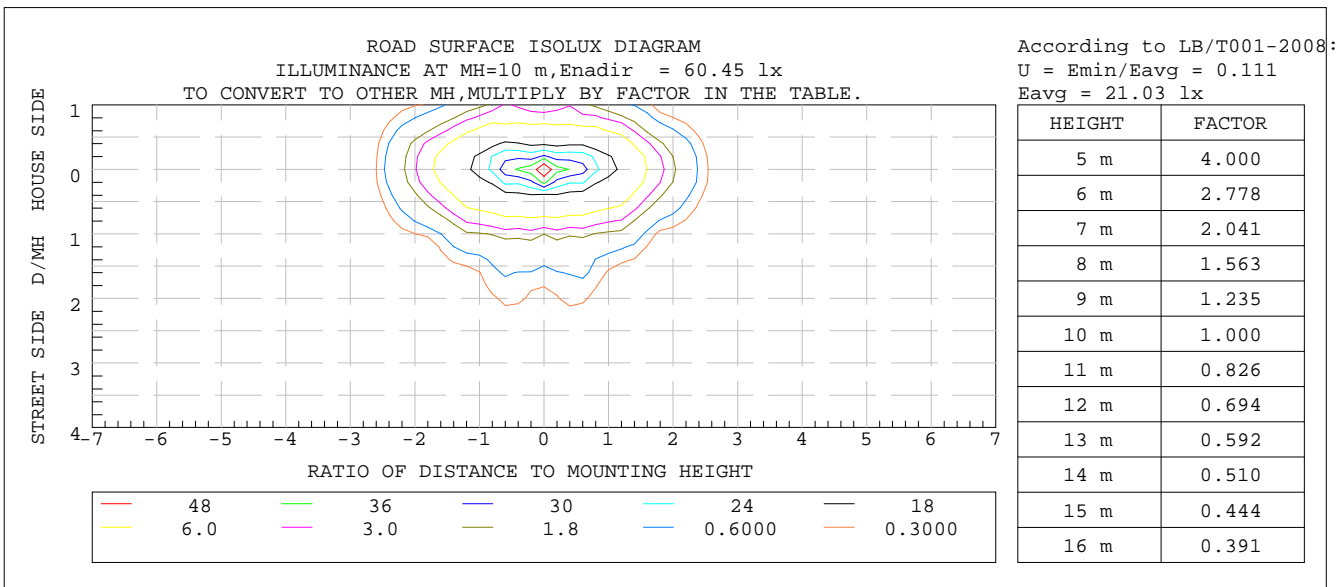
IES:Type III - Very Short  
 CIE:Average - Short  
 IES:Cut-off  
 CIE:Full cut-off  
 Max.At80:29.67cd/klm  
 Max.At90:1.445cd/klm  
 Max.80-90:31.99cd/klm

ISOCANDELA DIAGRAM	
UNIT	cd
Imax=100%	6455
— 90%	5809
— 80%	5164
— 70%	4518
— 60%	3873
— 50%	3227
— 40%	2582
— 30%	1936
— 20%	1291
— 10%	645
— 5%	323

C Range: 0 - 360DEG  
 C Interval: 5.0DEG  
 Test Speed: HIGH  
 Temperature:20DEG  
 Operators:XH  
 Test Date:2010-10-13

γ Range: 0 - 90DEG  
 γ Interval: 0.5DEG  
 Test System:EVERFINE GO-2000B SYSTEM V1.0.250  
 Humidity:65%  
 Test Distance:5.360m [K=1.0000]  
 Remarks: SL650-100W, 90LM/W

**COEFFICIENT OF UTILIZATION CURVE  
AND ISOLUX DIAGRAM**



C Range: 0 - 360DEG  
C Interval: 5.0DEG  
Test Speed: HIGH  
Temperature: 20DEG  
Operators: XH  
Test Date: 2010-10-13

$\gamma$  Range: 0 - 90DEG  
 $\gamma$  Interval: 0.5DEG  
Test System: EVERFINE GO-2000B SYSTEM V1.0.250  
Humidity: 65%  
Test Distance: 5.360m [K=1.0000]  
Remarks: SL650-100W, 90LM/W

ZONAL FLUX DIAGRAM

Test:U:233.3V I:0.4770A P:81.00W PF:0.9760 Lamp Flux:6900x1 lm		
NAME: LED STREET LIGHT	TYPE:LED	WEIGHT:
DIMENSION:	SPECIFICATION:SL650	SERIAL No.:
MANUFACTURER: FEELIGHT TECH CO., LIMITED	SURFACE:	PROTECTION ANGLE:

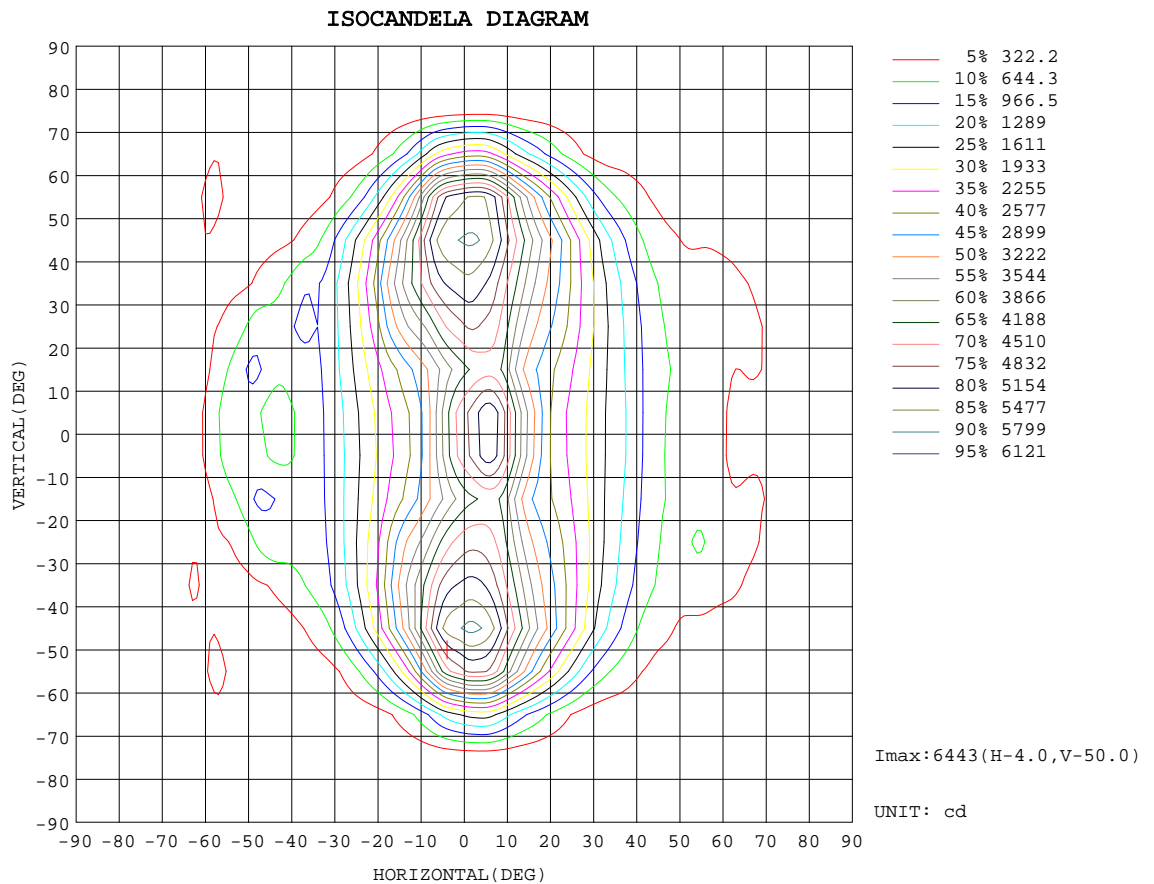
γ	C0	C45	C90	C135	C180	C225	C270	C315	γ	Φ zone	Φ total	%
5	5808	5556	5040	4908	5293	4942	5104	5599	0- 5	133.5	133.5	1.57
10	4381	4452	4035	3776	3761	3830	4164	4495	5- 10	331.4	464.9	5.48
15	3021	3249	4181	3078	2636	3065	4294	3309	10- 15	437.0	901.9	10.63
20	2214	2792	4326	2861	2254	2965	4423	2878	15- 20	529.3	1431	16.87
25	1870	2572	4735	2686	1863	2854	4857	2630	20- 25	632.1	2063	24.33
30	1506	2393	5144	2512	1433	2772	5290	2482	25- 30	745.5	2809	33.11
35	1171	2178	5233	2118	1011	2377	5290	2279	30- 35	830.7	3640	42.91
40	784.7	1893	5321	1694	725.1	1916	5289	2029	35- 40	855.2	4495	52.99
45	511.9	1483	5859	1324	526.2	1592	5850	1589	40- 45	867.6	5362	63.22
50	340.3	1094	6397	1062	482.5	1352	6412	1218	45- 50	902.1	6264	73.85
55	452.9	783.6	4859	528.6	987.3	701.2	5553	863.6	50- 55	858.2	7123	83.97
60	256.3	465.3	3322	209.9	754.0	233.6	4695	564.6	55- 60	642.6	7765	91.55
65	289.5	247.4	1717	123.3	293.0	142.0	2435	268.3	60- 65	386.1	8151	96.10
70	304.0	116.3	111.7	75.60	394.5	95.14	174.4	134.8	65- 70	180.3	8332	98.22
75	236.0	71.61	64.82	33.60	100.3	52.60	132.9	84.24	70- 75	68.70	8400	99.03
80	82.17	42.43	17.95	14.71	55.82	27.95	91.34	56.20	75- 80	47.43	8448	99.59
85	60.17	22.69	12.12	4.766	4.124	13.35	52.14	36.81	80- 85	25.11	8473	99.89
90	7.555	4.350	6.282	2.969	2.351	8.316	12.93	9.668	85- 90	9.328	8482	100.00
95									90- 95			
100									95-100			
105									100-105			
110									105-110			
115									110-115			
120									115-120			
125									120-125			
130									125-130			
135									130-135			
140									135-140			
145									140-145			
150									145-150			
155									150-155			
160									155-160			
165									160-165			
170									165-170			
175									170-175			
180									175-180			
DEG	LUMINOUS INTENSITY:cd								UNIT:lm			

C Range: 0 - 360DEG  
 C Interval: 5.0DEG  
 Test Speed: HIGH  
 Temperature:20DEG  
 Operators:XH  
 Test Date:2010-10-13

γ Range: 0 - 90DEG  
 γ Interval: 0.5DEG  
 Test System:EVERFINE GO-2000B SYSTEM V1.0.250  
 Humidity:65%  
 Test Distance:5.360m [K=1.0000]  
 Remarks: SL650-100W, 90LM/W

ISOCANDELA DIAGRAM

Test:U:233.3V I:0.4770A P:81.00W PF:0.9760 Lamp Flux:6900x1 lm		
NAME: LED STREET LIGHT	TYPE:LED	WEIGHT:
DIMENSION:	SPECIFICATION:SL650	SERIAL No.:
MANUFACTURER: FEELIGHT TECH CO., LIMITED	SURFACE:	PROTECTION ANGLE:



C Range: 0 - 360DEG  
 C Interval: 5.0DEG  
 Test Speed: HIGH  
 Temperature:20DEG  
 Operators:XH  
 Test Date:2010-10-13

$\gamma$  Range: 0 - 90DEG  
 $\gamma$  Interval: 0.5DEG  
 Test System:EVERFINE GO-2000B SYSTEM V1.0.250  
 Humidity:65%  
 Test Distance:5.360m [K=1.0000]  
 Remarks: SL650-100W, 90LM/W

## LUMINOUS DISTRIBUTION INTENSITY DATA

Test:U:233.3V I:0.4770A P:81.00W PF:0.9760 Lamp Flux:6900x1 lm		
NAME: LED STREET LIGHT	TYPE:LED	WEIGHT:
DIMENSION:	SPECIFICATION:SL650	SERIAL No.:
MANUFACTURER: FEELIGHT TECH CO., LIMITED	SURFACE:	PROTECTION ANGLE:

Table--1

UNIT: cd

C( DEG ) \ y ( DEG )	0	5	10	15	20	25	30	35	40	45	50	55	60	65	70	75	80	85	90
0	6045	6045	6045	6045	6045	6045	6045	6045	6045	6045	6045	6045	6045	6045	6045	6045	6045	6045	6045
5	5808	5752	5703	5661	5625	5595	5571	5551	5549	5556	5567	5561	5522	5487	5399	5295	5199	5116	5040
10	4381	4303	4244	4204	4184	4183	4220	4281	4358	4452	4517	4577	4623	4602	4557	4458	4316	4168	4035
15	3021	2996	2996	3011	3030	3045	3054	3074	3107	3249	3446	3665	3918	4112	4260	4309	4291	4246	4181
20	2214	2257	2307	2361	2424	2499	2587	2661	2711	2792	2891	3026	3223	3497	3803	4041	4144	4241	4326
25	1870	1915	1974	2048	2139	2217	2288	2382	2469	2572	2679	2847	3056	3364	3782	4191	4508	4666	4735
30	1506	1555	1620	1707	1790	1838	1921	2021	2172	2393	2643	2870	3146	3479	3963	4455	4843	5097	5144
35	1171	1223	1302	1405	1426	1453	1522	1692	1919	2178	2492	2842	3077	3377	3752	4244	4675	5062	5233
40	785	843	929	983	1009	1065	1210	1410	1648	1893	2154	2455	2808	3107	3476	3930	4449	4992	5321
45	512	592	681	653	669	774	938	1128	1292	1483	1731	2072	2497	2963	3454	4090	4805	5549	5859
50	340	423	509	561	580	581	697	785	918	1094	1373	1767	2294	2878	3502	4292	5185	6124	6397
55	453	466	495	674	685	555	491	536	598	784	1059	1451	1861	2241	2687	3199	3871	4676	4859
60	256	274	364	438	533	489	334	348	364	465	625	724	844	1094	1442	1884	2421	3175	3322
65	290	327	397	416	352	275	195	151	217	247	236	153	199	389	662	941	1225	1630	1717
70	304	296	268	246	207	188	139	108	99.9	116	145	112	81.0	115	146	139	121	131	112
75	236	226	197	190	191	144	102	81.5	68.8	71.6	104	78.9	36.5	29.3	30.9	30.1	37.7	64.2	64.8
80	82.2	86.3	86.1	121	154	184	108	75.3	48.3	42.4	48.4	53.4	38.9	18.5	16.5	16.3	16.6	17.8	18.0
85	60.2	69.9	67.7	72.3	78.7	78.2	79.6	74.1	27.0	22.7	19.1	27.2	25.3	11.5	10.1	10.4	10.8	11.8	12.1
90	7.55	8.57	8.39	8.73	8.61	6.30	5.11	4.30	4.23	4.35	4.50	4.57	4.61	4.69	4.84	5.10	5.54	6.10	6.28

C Range: 0 - 360DEG  
 C Interval: 5.0DEG  
 Test Speed: HIGH  
 Temperature: 20DEG  
 Operators: XH  
 Test Date: 2010-10-13

γ Range: 0 - 90DEG  
 γ Interval: 0.5DEG  
 Test System: EVERFINE GO-2000B SYSTEM V1.0.250  
 Humidity: 65%  
 Test Distance: 5.360m [K=1.0000]  
 Remarks: SL650-100W, 90LM/W



### LUMINOUS DISTRIBUTION INTENSITY DATA

Test:U:233.3V I:0.4770A P:81.00W PF:0.9760 Lamp Flux:6900x1 lm		
NAME: LED STREET LIGHT		TYPE:LED
DIMENSION:		SPECIFICATION:SL650
MANUFACTURER: FEELIGHT TECH CO., LIMITED		PROTECTION ANGLE:
		SURFACE:
		WEIGHT:
		SERIAL No.:

Table--2 UNIT: cd

C(DEC) γ (DEG)	95	100	105	110	115	120	125	130	135	140	145	150	155	160	165	170	175	180	185
0	6045	6045	6045	6045	6045	6045	6045	6045	6045	6045	6045	6045	6045	6045	6045	6045	6045	6045	6045
5	4988	4944	4913	4891	4876	4873	4876	4888	4908	4935	4962	4986	5018	5058	5106	5161	5223	5293	5228
10	3952	3946	3936	3917	3892	3849	3819	3797	3776	3748	3728	3717	3709	3696	3689	3693	3715	3761	3714
15	4125	4056	3954	3811	3667	3501	3323	3190	3078	2979	2906	2825	2759	2704	2670	2648	2636	2636	2642
20	4315	4178	4058	3915	3682	3477	3233	3044	2861	2701	2551	2411	2334	2288	2258	2243	2242	2254	2257
25	4731	4592	4393	4104	3763	3415	3135	2889	2686	2492	2315	2141	1981	1886	1856	1840	1843	1863	1858
30	5164	4997	4700	4268	3875	3548	3231	2837	2512	2250	2024	1827	1640	1477	1398	1387	1398	1433	1414
35	5236	5113	4832	4307	3881	3576	3078	2456	2118	1850	1654	1502	1273	1106	993	995	1002	1011	1015
40	5282	5259	4901	4214	3641	3124	2528	2092	1694	1359	1183	1058	959	884	852	806	757	725	741
45	5783	5609	4843	3967	3261	2709	2242	1744	1324	1040	904	851	849	891	784	620	577	526	562
50	6268	5886	4706	3613	2777	2126	1633	1277	1062	805	714	716	757	1098	1117	880	760	482	611
55	4717	4339	3351	2547	1959	1459	1012	674	529	465	375	394	421	670	832	845	880	987	926
60	3146	2636	1791	1223	859	646	458	275	210	201	200	207	247	256	353	454	511	754	584
65	1625	1313	846	513	274	182	144	143	123	132	134	152	167	181	255	240	272	293	282
70	109	112	126	116	87.4	81.4	79.9	77.8	75.6	85.5	88.5	146	274	282	375	271	253	395	280
75	52.5	31.8	29.9	27.8	26.3	32.4	33.8	31.2	33.6	43.9	123	236	417	162	167	94.9	95.4	100	104
80	17.3	16.2	16.0	15.2	13.9	14.7	14.9	14.1	14.7	26.4	119	77.7	93.1	67.1	43.0	48.0	39.6	55.8	47.9
85	11.4	10.6	10.1	9.35	8.19	7.15	6.27	5.45	4.77	4.12	3.75	3.76	8.12	6.04	3.30	3.77	7.64	4.12	14.1
90	5.76	5.22	4.82	4.42	4.09	3.79	3.50	3.22	2.97	2.73	2.55	2.43	2.34	2.22	2.08	1.89	1.70	2.35	7.37

C Range: 0 - 360DEG  
 C Interval: 5.0DEG  
 Test Speed: HIGH  
 Temperature: 20DEG  
 Operators: XH  
 Test Date: 2010-10-13

γ Range: 0 - 90DEG  
 γ Interval: 0.5DEG  
 Test System: EVERFINE GO-2000B SYSTEM V1.0.250  
 Humidity: 65%  
 Test Distance: 5.360m [K=1.0000]  
 Remarks: SL650-100W, 90LM/W

LUMINOUS DISTRIBUTION INTENSITY DATA

Test:U:233.3V I:0.4770A P:81.00W PF:0.9760 Lamp Flux:6900x1 lm		
NAME: LED STREET LIGHT	TYPE:LED	WEIGHT:
DIMENSION:	SPECIFICATION:SL650	SERIAL No.:
MANUFACTURER: FEELIGHT TECH CO., LIMITED	SURFACE:	PROTECTION ANGLE:

Table--3 UNIT: cd

C( DEG )	190	195	200	205	210	215	220	225	230	235	240	245	250	255	260	265	270	275	280
0	6045	6045	6045	6045	6045	6045	6045	6045	6045	6045	6045	6045	6045	6045	6045	6045	6045	6045	6045
5	5170	5120	5077	5041	5013	4993	4968	4942	4921	4909	4906	4910	4928	4956	4993	5045	5104	5179	5260
10	3691	3689	3701	3724	3745	3774	3802	3830	3862	3898	3945	3989	4002	4011	4024	4051	4164	4291	4433
15	2660	2688	2727	2789	2861	2917	2964	3065	3212	3399	3591	3755	3900	4024	4128	4224	4294	4320	4374
20	2273	2301	2342	2393	2473	2630	2794	2965	3138	3320	3555	3796	4012	4121	4222	4409	4423	4269	4179
25	1869	1897	1947	2066	2247	2443	2620	2854	3074	3330	3577	3913	4263	4534	4691	4877	4857	4748	4591
30	1421	1454	1552	1741	1957	2174	2426	2772	3107	3513	3822	4090	4493	4919	5178	5359	5290	5258	4978
35	1035	1064	1192	1388	1644	1814	2056	2377	2926	3534	3964	4243	4620	5047	5250	5387	5290	5110	4694
40	767	830	903	1029	1173	1321	1539	1916	2451	3054	3627	4147	4722	5259	5347	5419	5289	4899	4387
45	609	732	856	1011	965	985	1205	1592	2112	2686	3202	3749	4398	5250	5728	5821	5850	5500	4837
50	712	835	808	901	1108	990	993	1352	1623	1994	2493	3153	3999	5024	6059	6235	6412	6136	5320
55	949	1087	775	612	587	547	610	701	935	1287	1731	2307	3054	4069	5132	5372	5553	5189	4346
60	567	479	293	322	287	261	237	234	408	617	870	1287	1928	2906	4112	4491	4695	4191	3239
65	249	250	211	190	176	136	131	142	170	173	286	581	963	1514	2152	2341	2435	2180	1683
70	276	309	264	274	139	101	98.7	95.1	100	104	116	175	209	215	180	163	174	196	177
75	110	212	237	510	236	145	65.4	52.6	51.4	54.3	46.7	44.0	43.3	45.1	59.5	106	133	121	61.1
80	59.7	61.3	101	145	194	193	38.6	27.9	28.9	30.5	28.2	24.5	25.0	27.1	45.5	81.4	91.3	74.7	29.5
85	14.4	8.51	14.9	16.2	9.37	10.7	12.1	13.3	14.9	17.5	17.5	15.8	16.7	18.3	27.9	46.9	52.1	43.6	20.5
90	7.61	7.44	7.15	7.27	7.33	7.38	7.72	8.32	8.90	9.21	9.43	9.60	9.86	10.3	11.4	12.5	12.9	13.0	12.6

C Range: 0 - 360DEG  
C Interval: 5.0DEG  
Test Speed: HIGH  
Temperature:20DEG  
Operators:XH  
Test Date:2010-10-13

γ Range: 0 - 90DEG  
γ Interval: 0.5DEG  
Test System:EVERFINE GO-2000B SYSTEM V1.0.250  
Humidity:65%  
Test Distance:5.360m [K=1.0000]  
Remarks: SL650-100W, 90LM/W

LUMINOUS DISTRIBUTION INTENSITY DATA

Test:U:233.3V I:0.4770A P:81.00W PF:0.9760 Lamp Flux:6900x1 lm		
NAME: LED STREET LIGHT	TYPE:LED	WEIGHT:
DIMENSION:	SPECIFICATION:SL650	SERIAL No.:
MANUFACTURER: FEELIGHT TECH CO., LIMITED	SURFACE:	PROTECTION ANGLE:

Table--4

UNIT: cd

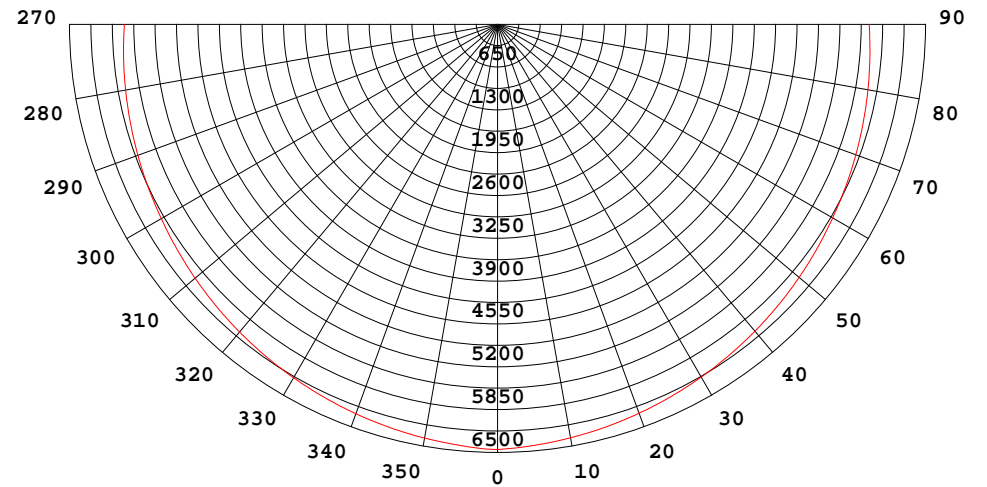
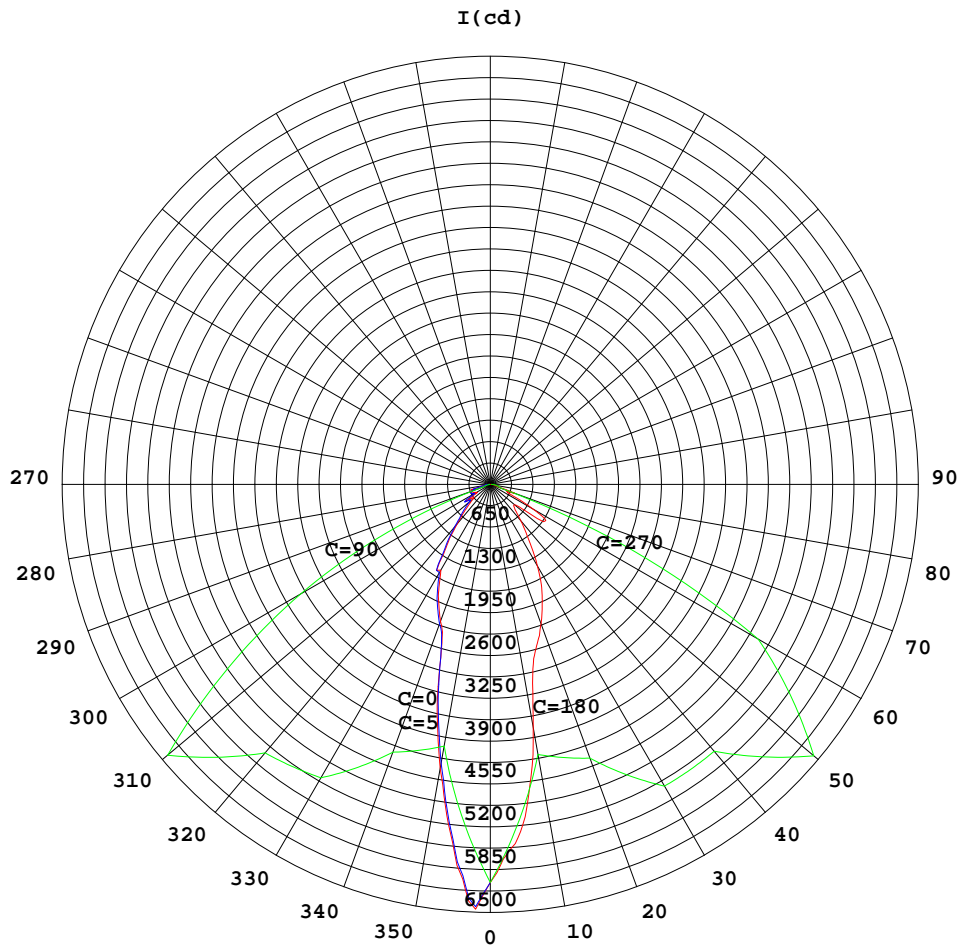
C( DEG) γ (DEG)	285	290	295	300	305	310	315	320	325	330	335	340	345	350	355				
0	6045	6045	6045	6045	6045	6045	6045	6045	6045	6045	6045	6045	6045	6045	6045				
5	5353	5455	5541	5577	5616	5617	5599	5585	5580	5593	5611	5637	5669	5708	5754				
10	4582	4674	4688	4664	4630	4569	4495	4386	4302	4243	4204	4199	4214	4250	4306				
15	4381	4293	4173	3958	3704	3486	3309	3193	3153	3128	3109	3083	3048	3020	3008				
20	4055	3840	3522	3269	3097	2969	2878	2782	2683	2596	2509	2425	2353	2296	2250				
25	4260	3847	3434	3132	2918	2742	2630	2523	2401	2307	2225	2141	2051	1977	1917				
30	4567	4056	3586	3246	2958	2727	2482	2252	2083	1960	1867	1801	1714	1623	1555				
35	4328	3863	3492	3193	2942	2606	2279	2010	1782	1603	1492	1459	1425	1311	1226				
40	3990	3580	3252	2931	2591	2267	2029	1745	1486	1273	1107	1042	1003	941	851				
45	4181	3595	3120	2640	2192	1874	1589	1389	1219	1001	821	704	701	703	599				
50	4419	3675	3084	2455	1914	1496	1218	987	844	742	620	579	553	502	421				
55	3567	2978	2504	2055	1620	1179	864	659	547	523	537	622	596	480	445				
60	2508	1889	1387	1027	819	706	565	416	372	378	493	502	415	343	268				
65	1325	962	608	315	191	275	268	220	164	243	329	378	424	376	306				
70	204	221	186	129	148	160	135	109	117	172	212	227	270	289	296				
75	49.4	51.3	51.0	55.6	107	108	84.2	80.5	90.9	115	164	200	207	212	235				
80	25.9	26.1	31.2	50.0	71.0	59.5	56.2	59.1	90.6	125	267	195	140	94.7	91.6				
85	18.3	17.6	20.7	31.8	38.5	30.2	36.8	47.0	94.6	81.2	95.7	85.3	82.0	68.7	73.8				
90	11.9	11.3	10.8	10.6	10.2	9.84	9.67	9.79	10.1	10.2	11.1	11.7	11.8	12.0	12.4				

C Range: 0 - 360DEG  
 C Interval: 5.0DEG  
 Test Speed: HIGH  
 Temperature:20DEG  
 Operators:XH  
 Test Date:2010-10-13

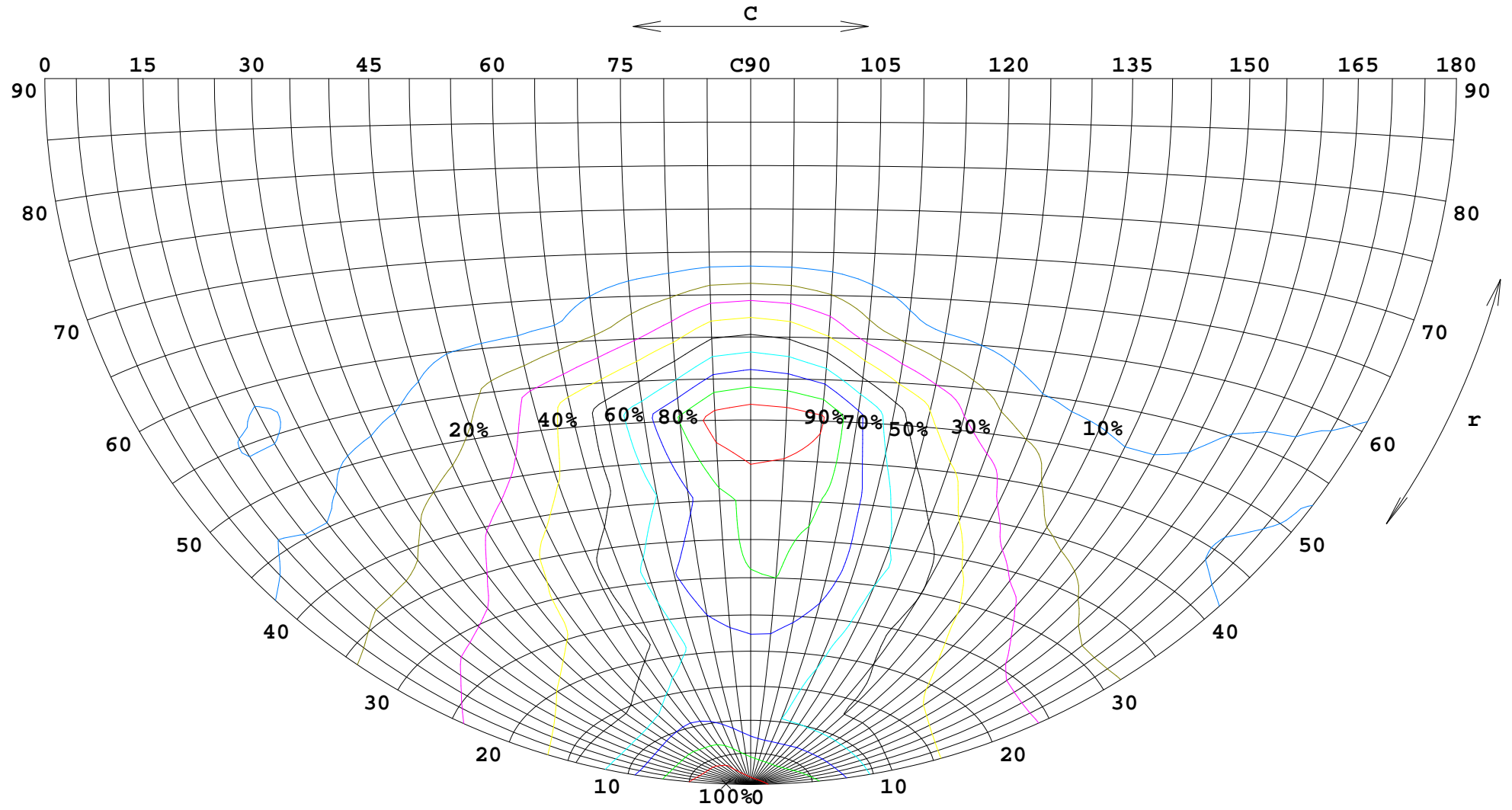
γ Range: 0 - 90DEG  
 γ Interval: 0.5DEG  
 Test System:EVERFINE GO-2000B SYSTEM V1.0.250  
 Humidity:65%  
 Test Distance:5.360m [K=1.0000]  
 Remarks: SL650-100W, 90LM/W

**FLUX DATA:**

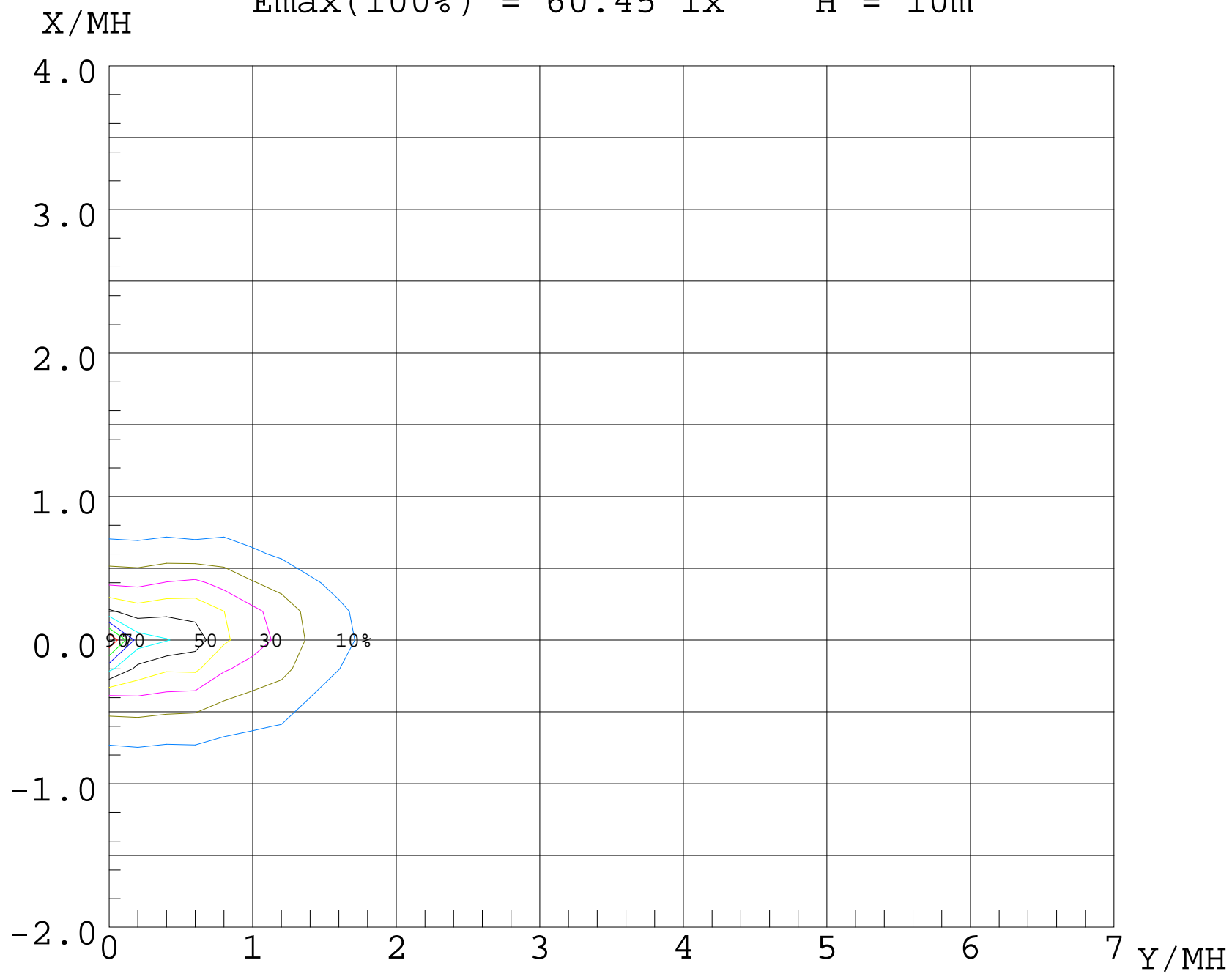
<b>EFFICIENCY:</b>	<b>94.2 %</b>
<b>STREET DOWN:</b>	<b>4461 lm</b>
<b>STREET UP:</b>	<b>0 lm</b>
<b>HOUSE DOWN:</b>	<b>4021 lm</b>
<b>HOUSE UP:</b>	<b>0 lm</b>



$I_{max}(100\%) = 6455 \text{ cd}$



$E_{\max}(100\%) = 60.45 \text{ lx}$        $H = 10\text{m}$



UF (%)

80

70

60

50

40

30

20

10

0

-2

-1

0

1

2

3

4 X/MH

20

15

10

5

0

