

Luminaire Photograph

LED STREET LIGHT LED SL470
FEELIGHT TECH CO., LIMITED



C Range: 0 - 360DEG
C Interval: 5.0DEG
Test Speed: HIGH
Temperature:20DEG
Operators:IVY
Test Date:2010-11-11

γ Range: 0 - 90DEG
 γ Interval: 0.5DEG
Test System:EVERFINE GO-2000B SYSTEM V1.0.250
Humidity:65%
Test Distance:5.360m [K=1.0000]
Remarks: SL470-50W, 90LM/W LED

LUMINOUS INTENSITY DISTRIBUTION DIAGRAM

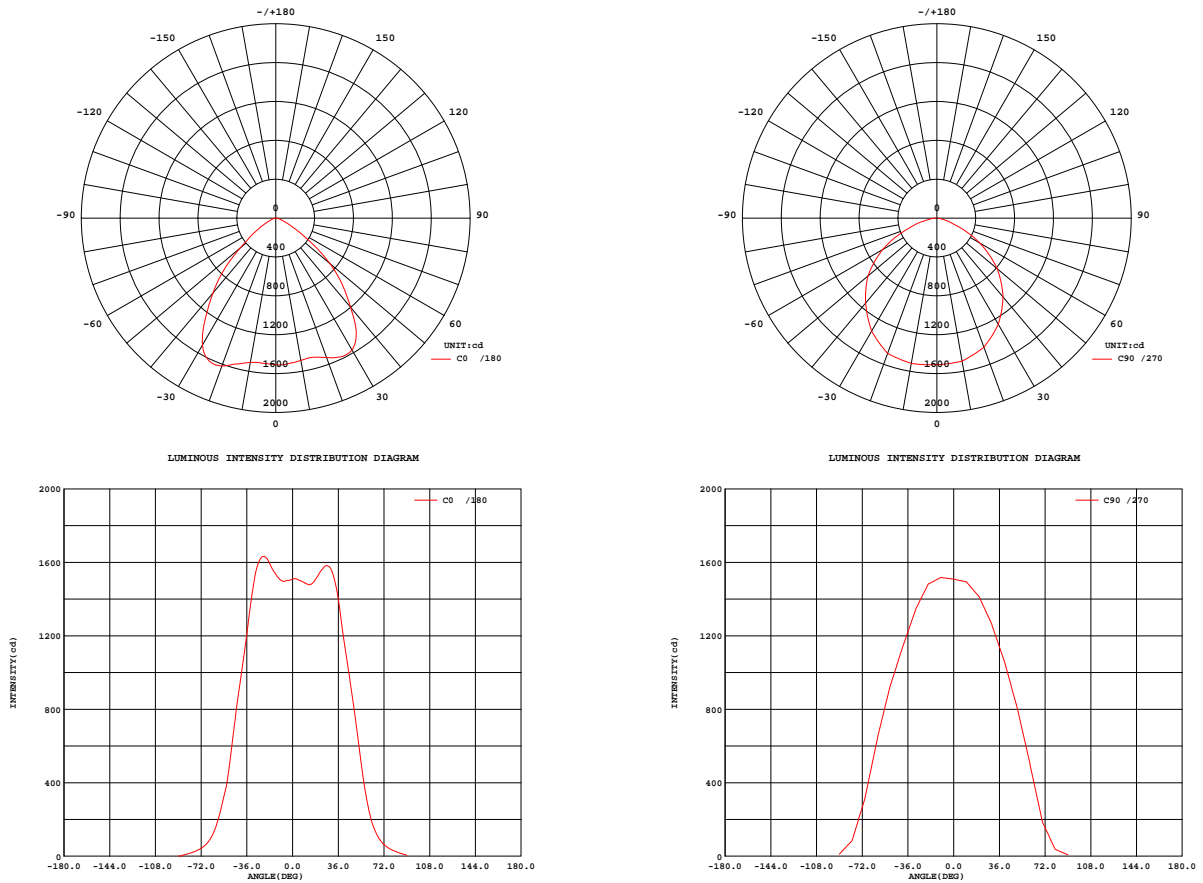


Fig. C0/C180

Fig. C90/C270

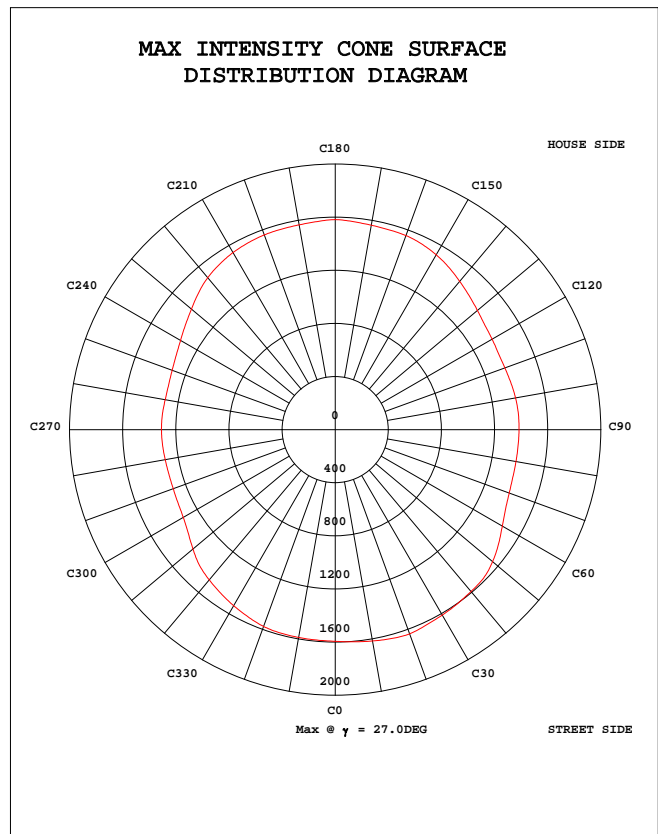
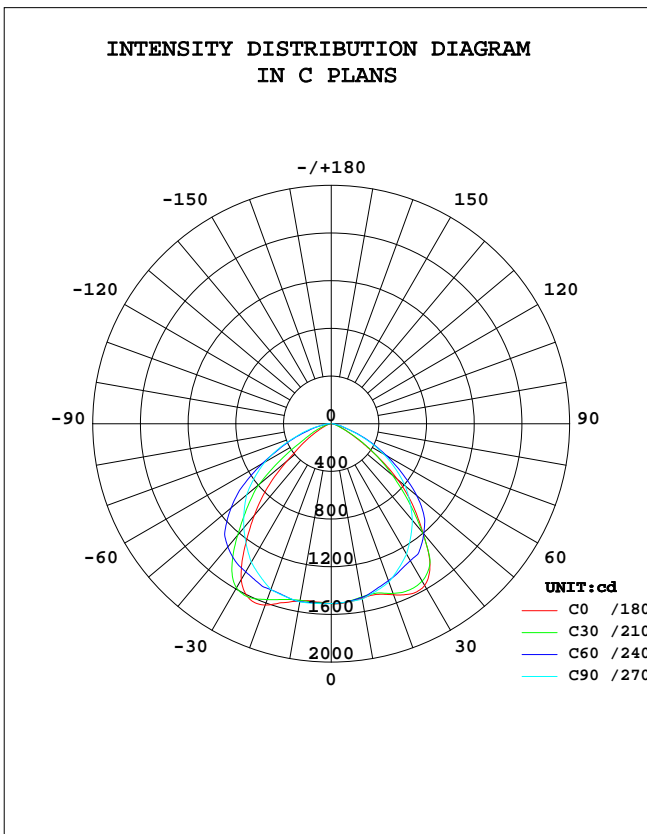
C Range: 0 - 360DEG
 C Interval: 5.0DEG
 Test Speed: HIGH
 Temperature: 20DEG
 Operators: IVY
 Test Date: 2010-11-11

γ Range: 0 - 90DEG
 γ Interval: 0.5DEG
 Test System: EVERFINE GO-2000B SYSTEM V1.0.250
 Humidity: 65%
 Test Distance: 5.360m [K=1.0000]
 Remarks: SL470-50W, 90LM/W LED

STREETLIGHT PHOTOMETRIC TEST REPORT

Test:U:236.4V I:0.2330A P:53.20W PF:0.9660 Lamp Flux:4200x1 lm		
NAME: LED STREET LIGHT	TYPE:LED	WEIGHT:4.1
DIMENSION: 470*270*115mm	SPECIFICATION:SL470	SERIAL No.:
MANUFACTURER: FEELIGHT TECH CO., LIMITED	SURFACE:	PROTECTION ANGLE:

DATA OF LAMP		PHOTOMETRIC DATA			
MODEL	SL470-50W	Imax(cd)	1636	η street_up(%)	0.0
NOMINAL POWER(W)	56	EFFICIENCY(%)	90.5	η street_down(%)	46.6
RATED VOLTAGE(V)	236	TOTAL FLUX(lm)	3802	η house_up(%)	0.0
NOMINAL FLUX(lm)	4200.0	MAXIMUM @(C, γ)	20,27.0	η house_down(%)	43.9
LAMPS INSIDE	1	η up(%)	0.0	76 FLASHAREA(m2)	0.0010
TEST VOLTAGE(V)	235.2	η down(%)	90.5	SLI	15.374



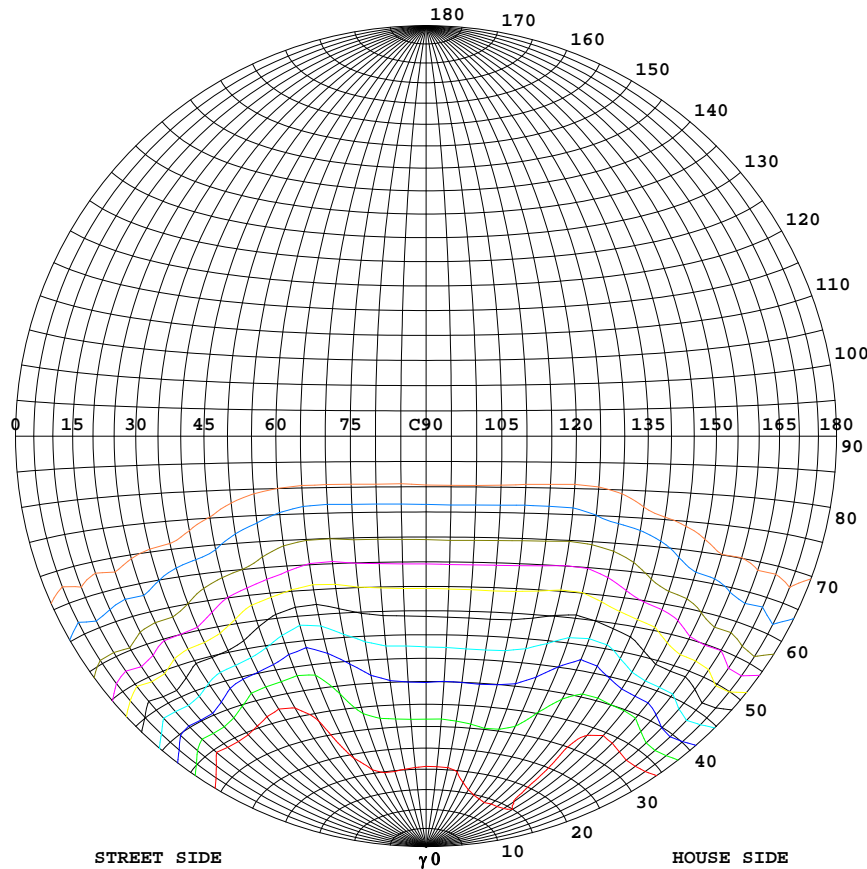
C Range: 0 - 360DEG
 C Interval: 5.0DEG
 Test Speed: HIGH
 Temperature:20DEG
 Operators:IVY
 Test Date:2010-11-11

γ Range: 0 - 90DEG
 γ Interval: 0.5DEG
 Test System:EVERFINE GO-2000B SYSTEM V1.0.250
 Humidity:65%
 Test Distance:5.360m [K=1.0000]
 Remarks: SL470-50W, 90LM/W LED

Note: SLI:Specific Luminaire Index

STREETLIGHT ISOCANDELA DIAGRAM

Test:U:236.4V I:0.2330A P:53.20W PF:0.9660 Lamp Flux:4200x1 lm		
NAME: LED STREET LIGHT	TYPE:LED	WEIGHT:4.1
DIMENSION: 470*270*115mm	SPECIFICATION:SL470	SERIAL No.:
MANUFACTURER: FEELIGHT TECH CO., LIMITED	SURFACE:	PROTECTION ANGLE:



Classification:

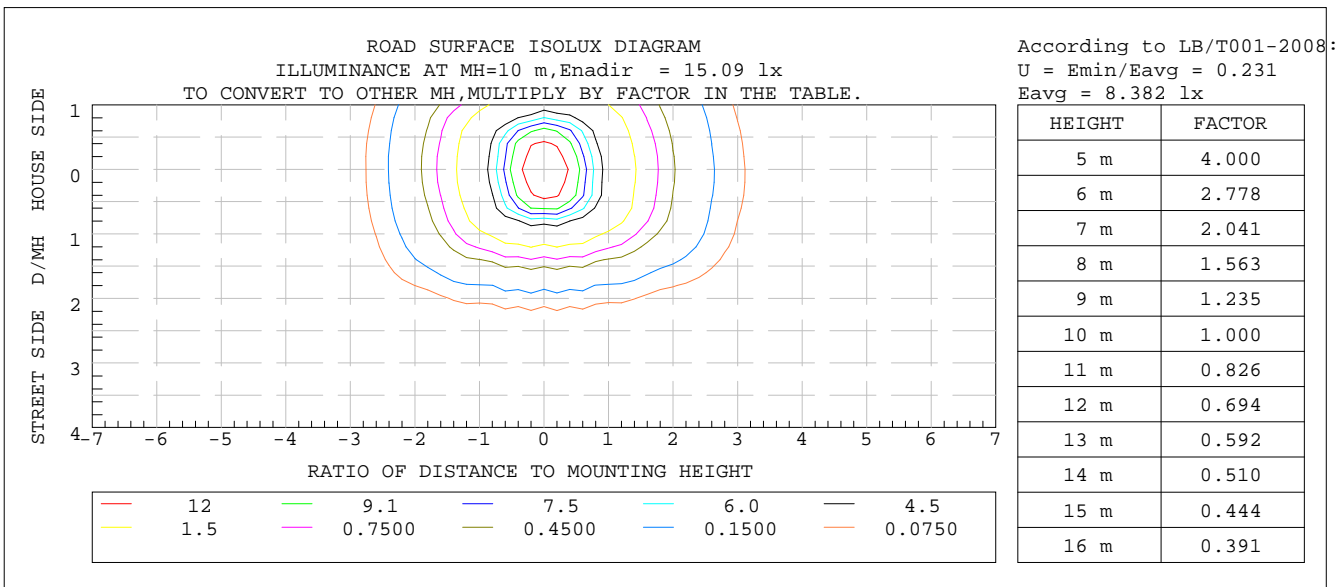
IES:Type II - Very Short
 CIE:Narrow - Short
 IES:Cut-off
 CIE:Full cut-off
 Max.At80:22.86cd/klm
 Max.At90:3.333cd/klm
 Max.80-90:22.86cd/klm

ISOCANDELA DIAGRAM	
UNIT	cd
I _{max} =100%	1636
90%	1473
80%	1309
70%	1145
60%	982
50%	818
40%	654
30%	491
20%	327
10%	164
5%	82

C Range: 0 - 360DEG
 C Interval: 5.0DEG
 Test Speed: HIGH
 Temperature:20DEG
 Operators:IVY
 Test Date:2010-11-11

γ Range: 0 - 90DEG
 γ Interval: 0.5DEG
 Test System:EVERFINE GO-2000B SYSTEM V1.0.250
 Humidity:65%
 Test Distance:5.360m [K=1.0000]
 Remarks: SL470-50W, 90LM/W LED

**COEFFICIENT OF UTILIZATION CURVE
AND ISOLUX DIAGRAM**



C Range: 0 - 360DEG
 C Interval: 5.0DEG
 Test Speed: HIGH
 Temperature: 20DEG
 Operators: IVY
 Test Date: 2010-11-11

γ Range: 0 - 90DEG
 γ Interval: 0.5DEG
 Test System: EVERFINE GO-2000B SYSTEM V1.0.250
 Humidity: 65%
 Test Distance: 5.360m [K=1.0000]
 Remarks: SL470-50W, 90LM/W LED

ZONAL FLUX DIAGRAM

Test:U:236.4V I:0.2330A P:53.20W PF:0.9660 Lamp Flux:4200x1 lm		
NAME: LED STREET LIGHT	TYPE:LED	WEIGHT:4.1
DIMENSION: 470*270*115mm	SPECIFICATION:SL470	SERIAL No.:
MANUFACTURER: FEELIGHT TECH CO., LIMITED	SURFACE:	PROTECTION ANGLE:

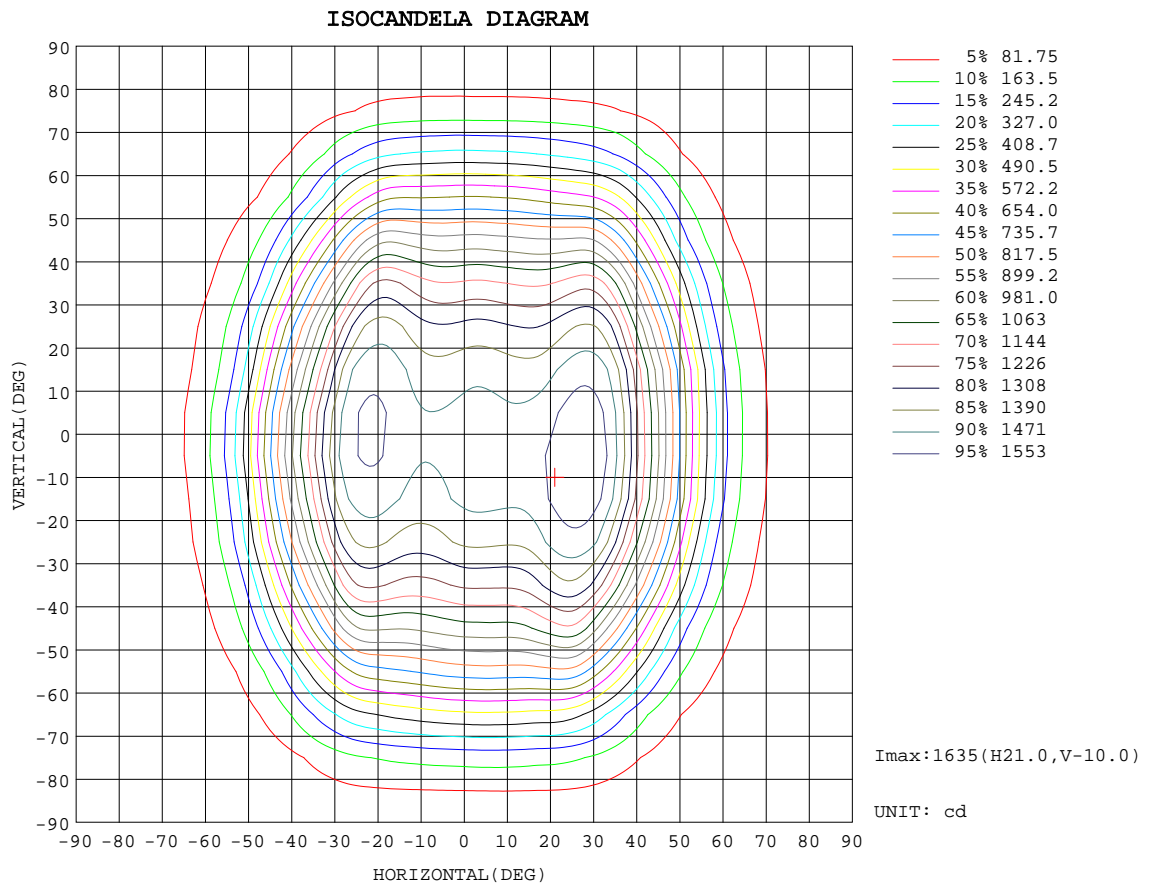
γ	C0	C45	C90	C135	C180	C225	C270	C315	γ	Φ zone	Φ total	%
5	1500	1507	1513	1507	1503	1499	1501	1496	0- 5	36.00	36.00	0.95
10	1508	1508	1518	1488	1487	1474	1494	1479	5- 10	107.1	143.1	3.77
15	1554	1507	1500	1468	1482	1454	1454	1457	10- 15	176.4	319.6	8.41
20	1619	1528	1482	1447	1526	1442	1414	1432	15- 20	244.5	564.1	14.84
25	1622	1569	1412	1432	1576	1448	1339	1440	20- 25	311.1	875.1	23.02
30	1510	1561	1342	1417	1567	1458	1263	1427	25- 30	369.1	1244	32.73
35	1264	1508	1242	1392	1444	1406	1161	1379	30- 35	409.6	1654	43.50
40	1006	1406	1141	1324	1199	1266	1059	1306	35- 40	421.5	2075	54.59
45	756.2	1154	1034	1193	968.4	1051	934.9	1111	40- 45	406.1	2481	65.27
50	478.2	883.0	926.0	1022	725.2	854.3	810.3	869.0	45- 50	367.8	2849	74.95
55	295.8	684.8	784.3	767.0	457.9	594.5	658.0	668.6	50- 55	308.1	3157	83.05
60	167.4	494.7	642.5	539.2	253.5	359.8	505.6	485.2	55- 60	237.2	3394	89.29
65	91.50	282.0	476.1	376.8	138.7	223.7	345.0	285.4	60- 65	169.4	3564	93.75
70	52.58	149.9	309.7	234.7	78.22	124.5	184.3	149.4	65- 70	110.5	3674	96.65
75	31.61	83.46	197.1	108.8	47.14	51.61	110.9	81.39	70- 75	65.37	3740	98.37
80	17.81	41.78	84.41	55.68	28.92	26.68	37.53	39.36	75- 80	36.43	3776	99.33
85	8.540	17.31	47.61	25.12	15.79	13.73	22.46	15.24	80- 85	17.30	3793	99.79
90	1.185	7.559	10.82	7.998	5.159	6.725	7.398	6.977	85- 90	8.138	3802	100.00
95									90- 95			
100									95-100			
105									100-105			
110									105-110			
115									110-115			
120									115-120			
125									120-125			
130									125-130			
135									130-135			
140									135-140			
145									140-145			
150									145-150			
155									150-155			
160									155-160			
165									160-165			
170									165-170			
175									170-175			
180									175-180			
DEG	LUMINOUS INTENSITY:cd									UNIT:lm		

C Range: 0 - 360DEG
 C Interval: 5.0DEG
 Test Speed: HIGH
 Temperature:20DEG
 Operators:IVY
 Test Date:2010-11-11

γ Range: 0 - 90DEG
 γ Interval: 0.5DEG
 Test System:EVERFINE GO-2000B SYSTEM V1.0.250
 Humidity:65%
 Test Distance:5.360m [K=1.0000]
 Remarks: SL470-50W, 90LM/W LED

ISOCANDELA DIAGRAM

Test:U:236.4V I:0.2330A P:53.20W PF:0.9660 Lamp Flux:4200x1 lm		
NAME: LED STREET LIGHT	TYPE:LED	WEIGHT:4.1
DIMENSION: 470*270*115mm	SPECIFICATION:SL470	SERIAL No.:
MANUFACTURER: FEELIGHT TECH CO., LIMITED	SURFACE:	PROTECTION ANGLE:



C Range: 0 - 360DEG
 C Interval: 5.0DEG
 Test Speed: HIGH
 Temperature:20DEG
 Operators:IVY
 Test Date:2010-11-11

γ Range: 0 - 90DEG
 γ Interval: 0.5DEG
 Test System:EVERFINE GO-2000B SYSTEM V1.0.250
 Humidity:65%
 Test Distance:5.360m [K=1.0000]
 Remarks: SL470-50W, 90LM/W LED

LUMINOUS DISTRIBUTION INTENSITY DATA

Test:U:236.4V I:0.2330A P:53.20W PF:0.9660 Lamp Flux:4200x1 lm		
NAME: LED STREET LIGHT	TYPE:LED	WEIGHT:4.1
DIMENSION: 470*270*115mm	SPECIFICATION:SL470	SERIAL No.:
MANUFACTURER: FEELIGHT TECH CO., LIMITED	SURFACE:	PROTECTION ANGLE:

Table--1

UNIT: cd

C(DEC)\y (DEC)	0	5	10	15	20	25	30	35	40	45	50	55	60	65	70	75	80	85	90
0	1509	1509	1509	1509	1509	1509	1509	1509	1509	1509	1509	1509	1509	1509	1509	1509	1509	1509	1509
5	1500	1501	1501	1502	1503	1504	1505	1505	1506	1507	1508	1508	1509	1510	1511	1511	1512	1513	1513
10	1508	1507	1507	1506	1506	1505	1504	1505	1506	1508	1510	1512	1514	1516	1517	1518	1518	1518	1518
15	1554	1552	1549	1545	1540	1534	1527	1519	1513	1507	1502	1499	1498	1497	1496	1497	1498	1498	1500
20	1619	1616	1610	1602	1592	1580	1570	1559	1545	1528	1511	1494	1482	1475	1471	1471	1474	1478	1482
25	1622	1626	1630	1634	1634	1624	1610	1597	1583	1569	1547	1508	1466	1436	1419	1411	1409	1410	1412
30	1510	1534	1564	1595	1602	1593	1589	1586	1583	1561	1532	1489	1435	1386	1358	1345	1342	1341	1342
35	1264	1314	1379	1445	1432	1435	1453	1485	1508	1508	1492	1462	1405	1339	1289	1260	1247	1243	1242
40	1006	1062	1135	1161	1153	1163	1223	1296	1365	1406	1398	1385	1349	1290	1226	1177	1152	1144	1141
45	756	822	906	887	883	931	999	1079	1116	1154	1200	1250	1259	1198	1130	1071	1043	1038	1034
50	478	564	628	603	630	711	785	802	835	883	964	1045	1095	1060	1000	953	931	932	926
55	296	347	357	340	405	474	492	523	602	685	773	849	903	898	847	810	792	787	784
60	167	201	188	200	243	251	263	328	408	495	559	616	667	697	683	657	648	642	643
65	91.5	114	97.3	122	123	129	162	199	237	282	327	389	456	498	506	487	482	477	476
70	52.6	60.4	59.7	63.6	63.8	76.4	87.9	98.7	111	150	195	247	294	320	325	313	314	312	310
75	31.6	33.0	37.1	35.8	40.1	40.2	42.1	50.3	64.3	83.5	111	142	171	193	200	198	199	199	197
80	17.8	20.2	20.1	21.6	21.9	23.8	25.2	27.7	33.1	41.8	55.0	69.4	82.3	91.0	93.2	90.8	87.9	86.9	84.4
85	8.54	10.2	10.3	11.5	11.9	12.2	12.5	13.4	14.6	17.3	23.1	31.3	39.8	46.0	49.1	49.4	48.9	48.9	47.6
90	1.19	0.89	1.31	2.91	4.15	5.01	5.70	6.33	6.90	7.56	8.79	10.9	13.0	14.0	13.5	12.7	12.1	11.3	10.8

C Range: 0 - 360DEG	γ Range: 0 - 90DEG
C Interval: 5.0DEG	γ Interval: 0.5DEG
Test Speed: HIGH	Test System:EVERFINE GO-2000B SYSTEM V1.0.250
Temperature:20DEG	Humidity:65%
Operators:IVY	Test Distance:5.360m [K=1.0000]
Test Date:2010-11-11	Remarks: SL470-50W, 90LM/W LED

LUMINOUS DISTRIBUTION INTENSITY DATA

Test:U:236.4V I:0.2330A P:53.20W PF:0.9660 Lamp Flux:4200x1 lm		
NAME: LED STREET LIGHT	TYPE:LED	WEIGHT:4.1
DIMENSION: 470*270*115mm	SPECIFICATION:SL470	SERIAL No.:
MANUFACTURER: FEELIGHT TECH CO., LIMITED	SURFACE:	PROTECTION ANGLE:

Table--2

UNIT: cd

C (DEG) \ γ (DEG)	95	100	105	110	115	120	125	130	135	140	145	150	155	160	165	170	175	180	185
0	1509	1509	1509	1509	1509	1509	1509	1509	1509	1509	1509	1509	1509	1509	1509	1509	1509	1509	1509
5	1513	1514	1514	1513	1512	1511	1509	1508	1507	1506	1505	1504	1504	1503	1503	1503	1503	1503	1502
10	1517	1515	1511	1506	1501	1496	1493	1490	1488	1486	1485	1484	1483	1484	1484	1485	1486	1487	1484
15	1499	1495	1490	1484	1477	1472	1468	1467	1468	1471	1472	1473	1475	1478	1480	1482	1482	1482	1483
20	1480	1477	1471	1458	1448	1440	1438	1441	1447	1461	1482	1504	1514	1520	1524	1526	1527	1526	1530
25	1412	1408	1400	1391	1386	1391	1398	1412	1432	1459	1488	1519	1546	1560	1563	1566	1571	1576	1572
30	1342	1334	1323	1313	1314	1326	1348	1379	1417	1459	1492	1511	1521	1526	1529	1537	1550	1567	1546
35	1244	1239	1231	1229	1241	1268	1312	1352	1392	1425	1449	1465	1448	1419	1382	1384	1406	1444	1386
40	1147	1144	1141	1144	1155	1186	1235	1288	1324	1325	1310	1298	1281	1203	1140	1120	1151	1199	1129
45	1034	1031	1031	1036	1052	1093	1147	1191	1193	1133	1059	1030	1017	1001	935	887	916	968	891
50	921	916	913	914	931	966	1017	1042	1022	933	858	788	761	759	717	638	651	725	627
55	781	779	776	780	796	823	844	816	767	721	677	593	511	481	485	396	382	458	364
60	640	639	636	637	646	663	658	610	539	479	437	398	322	252	254	233	201	254	188
65	473	473	474	478	483	493	485	441	377	301	230	205	185	152	124	136	108	139	100
70	305	307	309	312	315	321	307	277	235	187	140	105	82.7	82.9	72.1	69.1	64.1	78.2	61.3
75	194	195	194	195	192	187	165	135	109	89.3	71.0	58.1	47.6	41.7	43.3	39.5	41.9	47.1	41.2
80	84.1	85.2	88.4	93.1	94.7	96.0	87.9	73.6	55.7	40.1	30.1	25.8	26.5	26.8	25.5	25.1	23.4	28.9	23.4
85	47.2	46.8	47.4	48.5	47.6	46.6	41.6	34.1	25.1	18.4	15.2	14.4	14.4	13.9	12.7	13.1	12.3	15.8	12.1
90	10.8	10.7	11.1	11.5	11.8	11.6	10.7	9.18	8.00	7.36	6.94	6.54	6.04	5.35	4.51	3.58	2.31	5.16	3.69

C Range: 0 - 360DEG
 C Interval: 5.0DEG
 Test Speed: HIGH
 Temperature: 20DEG
 Operators: IVY
 Test Date: 2010-11-11

γ Range: 0 - 90DEG
 γ Interval: 0.5DEG
 Test System: EVERFINE GO-2000B SYSTEM V1.0.250
 Humidity: 65%
 Test Distance: 5.360m [K=1.0000]
 Remarks: SL470-50W, 90LM/W LED

LUMINOUS DISTRIBUTION INTENSITY DATA

Test:U:236.4V I:0.2330A P:53.20W PF:0.9660 Lamp Flux:4200x1 lm		
NAME: LED STREET LIGHT	TYPE:LED	WEIGHT:4.1
DIMENSION: 470*270*115mm	SPECIFICATION:SL470	SERIAL No.:
MANUFACTURER: FEELIGHT TECH CO., LIMITED	SURFACE:	PROTECTION ANGLE:

Table--3

UNIT: cd

C(DEG) γ (DEG)	190	195	200	205	210	215	220	225	230	235	240	245	250	255	260	265	270	275	280
0	1509	1509	1509	1509	1509	1509	1509	1509	1509	1509	1509	1509	1509	1509	1509	1509	1509	1509	1509
5	1501	1500	1500	1499	1499	1499	1499	1499	1499	1499	1500	1501	1501	1501	1501	1501	1501	1501	1500
10	1482	1480	1478	1477	1475	1474	1474	1474	1476	1477	1479	1481	1484	1487	1490	1492	1494	1492	1492
15	1483	1482	1479	1476	1471	1467	1462	1454	1446	1441	1440	1442	1444	1447	1450	1453	1454	1452	1450
20	1533	1534	1532	1526	1514	1490	1466	1442	1423	1410	1401	1398	1400	1405	1409	1413	1414	1410	1405
25	1569	1567	1567	1559	1540	1517	1486	1448	1416	1387	1362	1344	1334	1331	1332	1337	1339	1336	1330
30	1531	1525	1526	1527	1525	1516	1494	1458	1416	1370	1327	1294	1271	1255	1253	1260	1263	1261	1255
35	1346	1329	1362	1402	1441	1432	1420	1406	1389	1359	1294	1233	1190	1166	1158	1161	1161	1157	1154
40	1078	1081	1123	1179	1191	1199	1222	1266	1282	1263	1207	1148	1102	1069	1062	1061	1059	1053	1053
45	835	865	912	916	914	931	984	1051	1119	1144	1103	1036	988	952	937	936	935	930	933
50	589	645	669	655	669	720	783	854	894	930	935	899	854	827	810	811	810	807	812
55	352	408	388	391	458	525	563	595	645	690	728	736	704	678	664	661	658	655	659
60	202	209	194	229	273	301	321	360	435	498	536	552	539	522	514	511	506	502	501
65	119	103	114	128	132	140	178	224	274	328	361	376	372	361	353	350	345	344	346
70	63.1	62.2	65.6	61.1	66.6	77.5	96.4	124	154	186	204	211	206	198	192	189	184	187	191
75	38.0	40.0	37.5	38.2	38.6	41.4	45.9	51.6	64.7	84.7	101	113	116	115	115	113	111	112	113
80	24.4	24.2	24.7	23.5	22.2	21.9	22.9	26.7	33.8	42.7	48.4	51.6	48.9	45.4	41.9	38.3	37.5	37.9	39.0
85	13.3	12.6	13.3	13.3	13.0	12.8	12.9	13.7	16.1	20.1	23.1	25.7	25.4	24.7	23.8	22.6	22.5	22.4	22.3
90	4.03	5.12	5.76	6.11	6.28	6.38	6.52	6.72	6.94	7.19	7.41	7.55	7.55	7.47	7.43	7.39	7.40	7.39	7.45

C Range: 0 - 360DEG
 C Interval: 5.0DEG
 Test Speed: HIGH
 Temperature:20DEG
 Operators:IVY
 Test Date:2010-11-11

γ Range: 0 - 90DEG
 γ Interval: 0.5DEG
 Test System:EVERFINE GO-2000B SYSTEM V1.0.250
 Humidity:65%
 Test Distance:5.360m [K=1.0000]
 Remarks: SL470-50W, 90LM/W LED

LUMINOUS DISTRIBUTION INTENSITY DATA

Test:U:236.4V I:0.2330A P:53.20W PF:0.9660 Lamp Flux:4200x1 lm		
NAME: LED STREET LIGHT	TYPE:LED	WEIGHT:4.1
DIMENSION: 470*270*115mm	SPECIFICATION:SL470	SERIAL No.:
MANUFACTURER: FEELIGHT TECH CO., LIMITED	SURFACE:	PROTECTION ANGLE:

Table--4

UNIT: cd

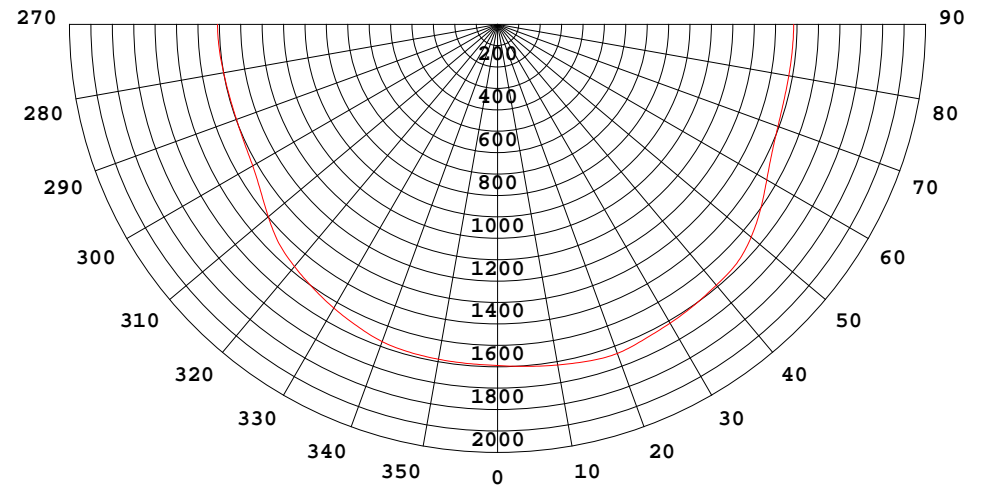
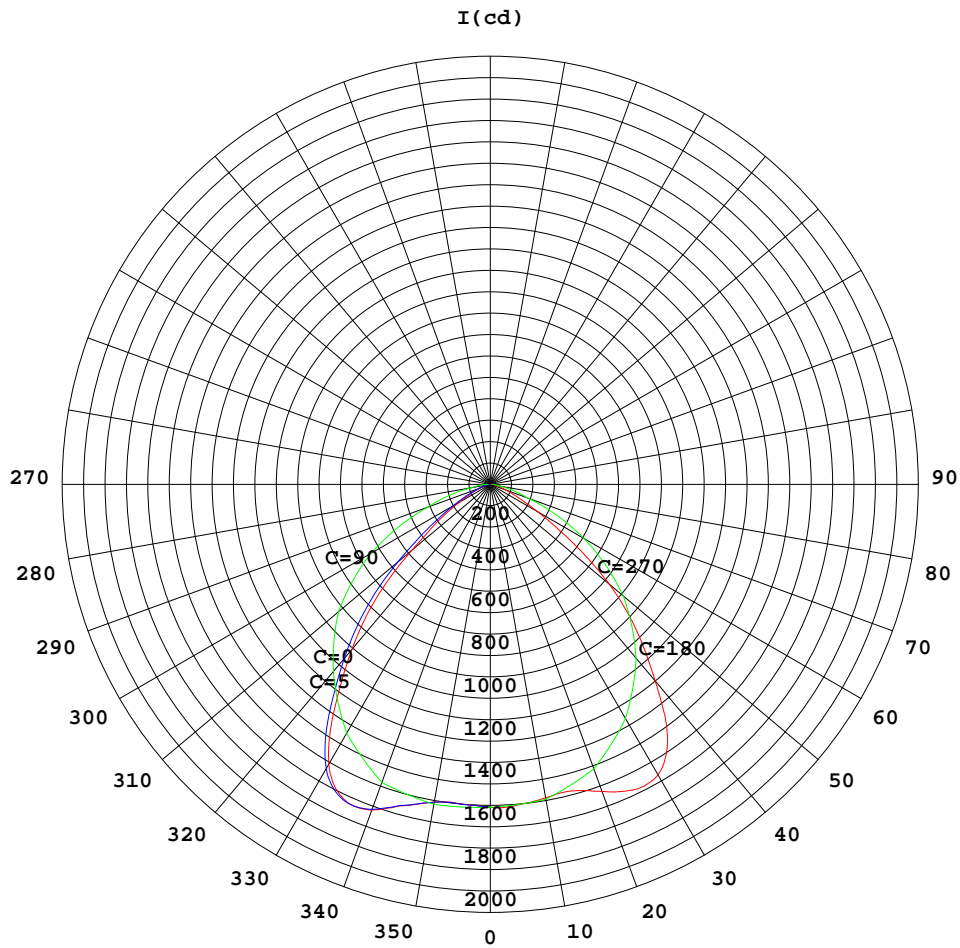
C(DEG) γ (DEG)	285	290	295	300	305	310	315	320	325	330	335	340	345	350	355				
0	1509	1509	1509	1509	1509	1509	1509	1509	1509	1509	1509	1509	1509	1509	1509				
5	1499	1499	1498	1497	1496	1496	1496	1496	1496	1496	1496	1497	1498	1498	1499				
10	1490	1488	1486	1484	1481	1479	1479	1480	1481	1483	1486	1491	1495	1499	1504				
15	1447	1445	1443	1444	1446	1451	1457	1463	1471	1482	1493	1506	1519	1531	1543				
20	1400	1395	1395	1399	1405	1416	1432	1453	1474	1495	1518	1540	1562	1583	1602				
25	1327	1328	1334	1347	1370	1407	1440	1469	1497	1524	1553	1577	1592	1602	1612				
30	1253	1255	1264	1285	1324	1374	1427	1471	1496	1514	1534	1555	1558	1541	1523				
35	1156	1165	1183	1216	1271	1329	1379	1411	1420	1410	1403	1408	1428	1367	1308				
40	1056	1068	1092	1136	1195	1257	1306	1306	1259	1192	1136	1132	1145	1124	1055				
45	938	953	984	1036	1098	1120	1111	1088	1052	971	908	872	882	907	822				
50	813	822	843	886	931	917	869	822	784	764	704	628	603	632	568				
55	661	669	686	719	748	728	669	595	523	494	475	406	340	359	347				
60	503	505	517	534	542	528	485	418	336	269	254	245	202	190	202				
65	349	352	355	354	340	315	285	247	206	167	130	123	121	97.4	113				
70	197	204	211	215	210	184	149	117	102	89.4	75.1	62.1	61.9	59.0	60.1				
75	114	115	117	115	108	95.3	81.4	64.8	50.3	40.1	38.2	38.8	35.5	37.1	33.4				
80	41.1	44.3	48.9	51.3	50.2	46.3	39.4	31.8	25.9	22.6	22.1	21.8	22.6	21.8	21.5				
85	22.4	22.7	23.5	23.1	21.3	18.4	15.2	13.0	12.0	11.8	12.1	12.4	12.6	11.8	11.6				
90	7.54	7.63	7.68	7.67	7.50	7.30	6.98	6.69	6.46	6.32	6.19	6.00	5.84	5.68	5.24				

C Range: 0 - 360DEG
 C Interval: 5.0DEG
 Test Speed: HIGH
 Temperature:20DEG
 Operators:IVY
 Test Date:2010-11-11

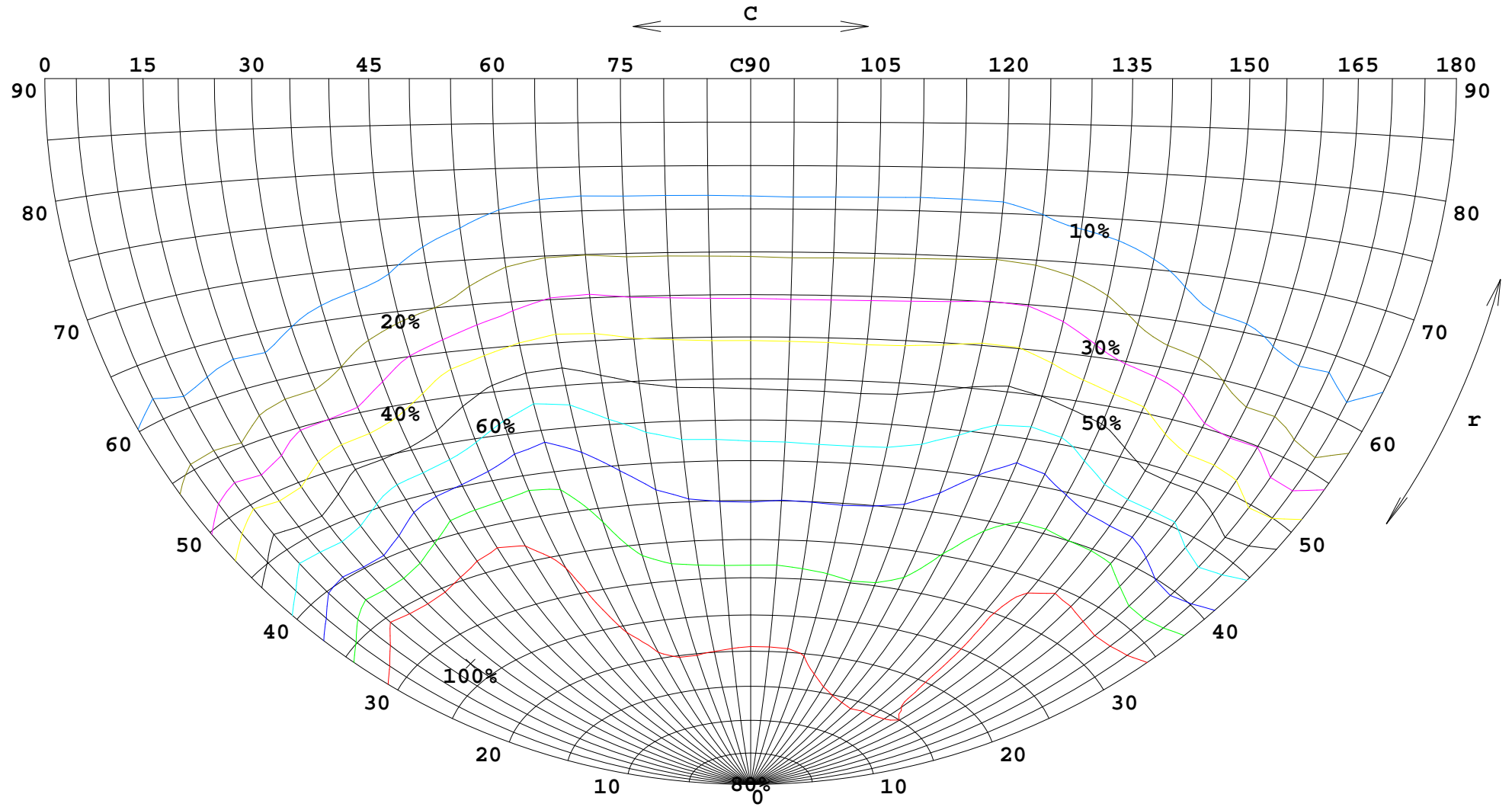
γ Range: 0 - 90DEG
 γ Interval: 0.5DEG
 Test System:EVERFINE GO-2000B SYSTEM V1.0.250
 Humidity:65%
 Test Distance:5.360m [K=1.0000]
 Remarks: SL470-50W, 90LM/W LED

FLUX DATA:

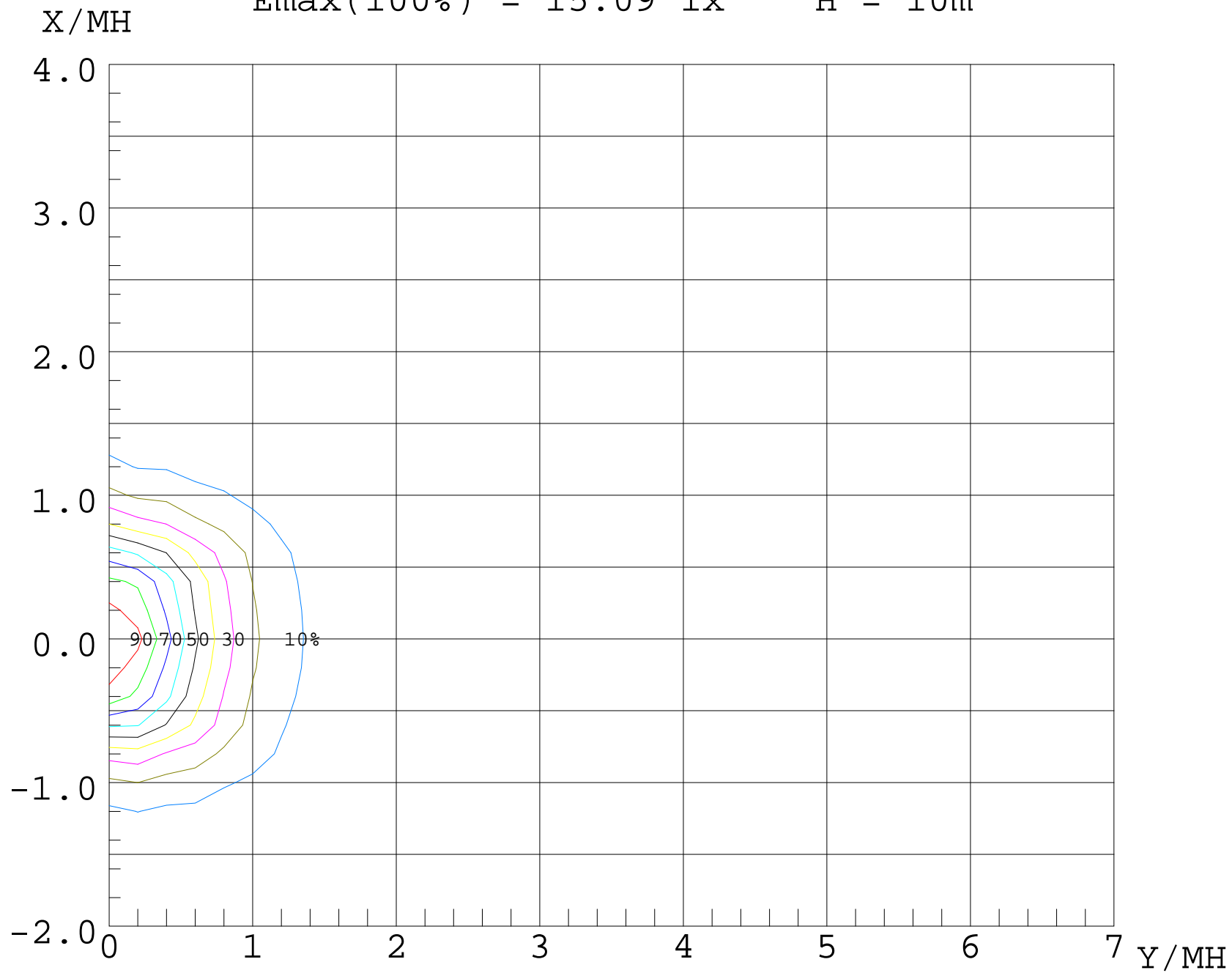
EFFICIENCY:	90.5 %
STREET DOWN:	1957 lm
STREET UP:	0 lm
HOUSE DOWN:	1845 lm
HOUSE UP:	0 lm



$I_{max}(100\%) = 1636 \text{ cd}$



$E_{\max}(100\%) = 15.09 \text{ lx}$ $H = 10\text{m}$



UF (%)

80

70

60

50

40

30

20

10

0

-2

-1

0

1

2

3

4 X/MH

20

15

10

5

0

