

LED High Bay Light - HB3150



I. Application

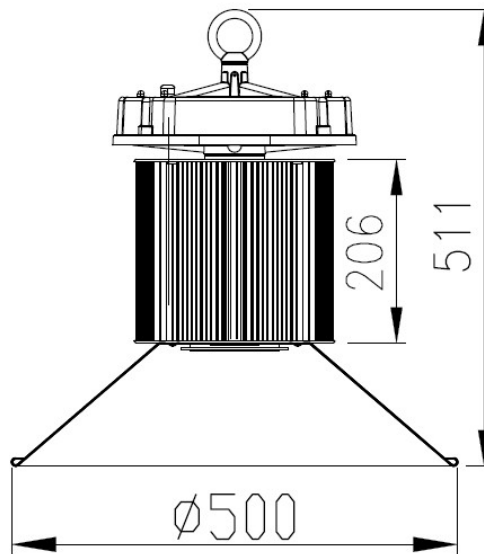
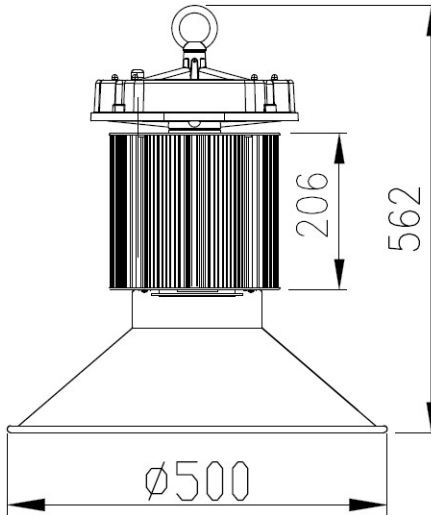
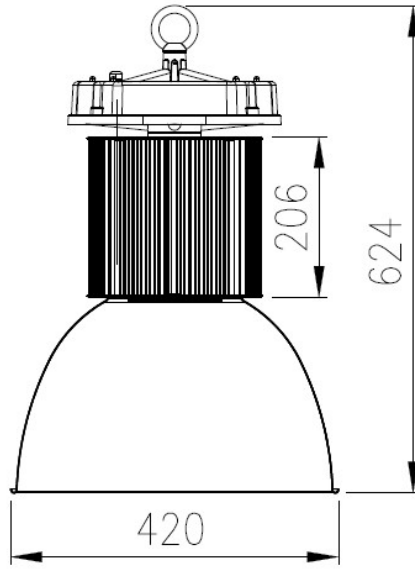
Workshop, warehouse, highway toll stations, gas stations, supermarkets, Exhibition halls, stadiums, etc.

II. Features

1. Applying heat pipe technology to obtain higher efficiency of heat dissipation, lighter of aluminum housing.
2. Design of module aluminum housing can improve horizontal heat convection to prevent driver casing overheating and protect the driver working under normal temperature.
3. LED chip options: BridgeLux / CREE / PHILIPS.
4. Offering three or five years of warranty .

LED High Bay Light - HB3150

III. Drawing

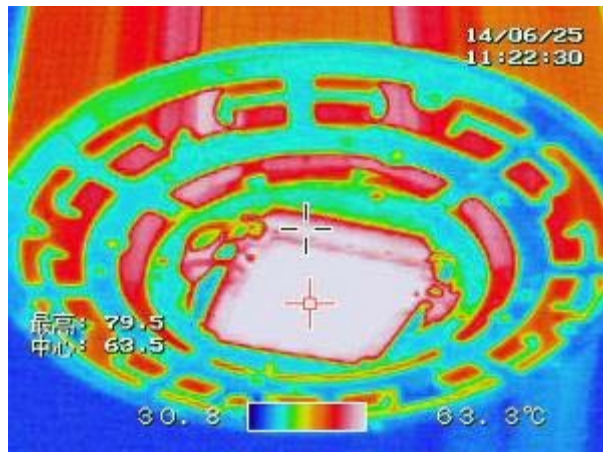
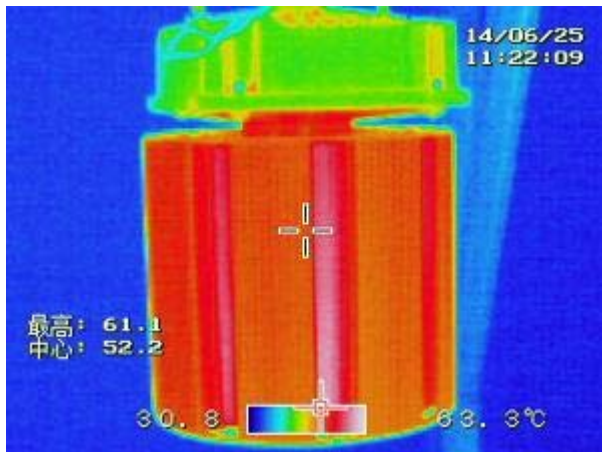


LED High Bay Light - HB3150

IV. Technical Parameter

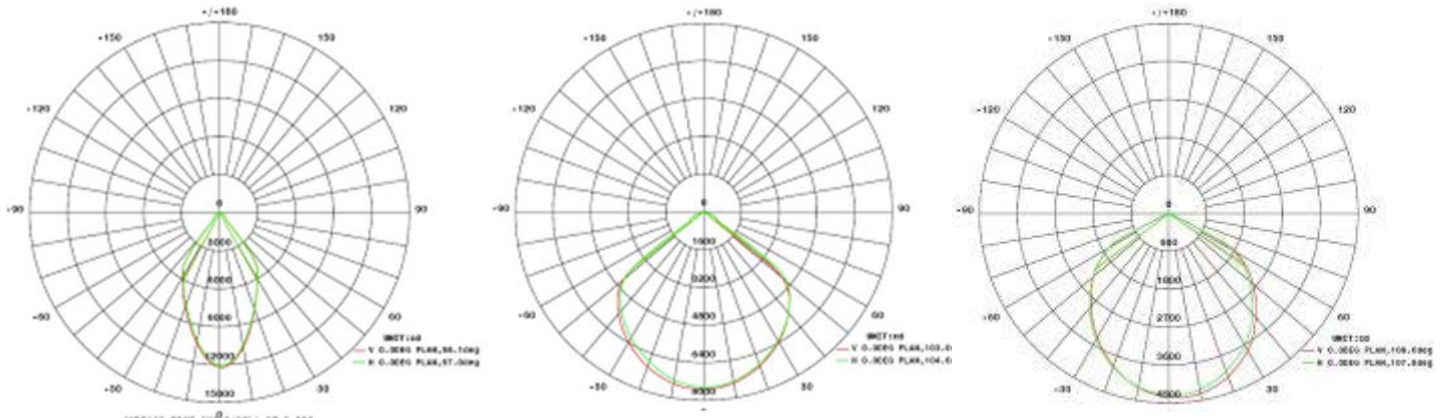
Item No.	Input Voltage	Power	Beam Angle	CRI	Lumens
HB3150-D45	AC100V-277V	155W	45°	Ra≥70	13200 LM
HB3150-D90	AC100V-277V	155W	90°	Ra≥70	13650 LM
HB3150-D120	AC100V-277V	155W	120°	Ra≥70	14250 LM
BridgeLux / CREE / PHILIPS					
CCT: 3000K/4000K/5000K/6000K					
Driver Efficiency >0.9					
PF>0.95					
Working Ambient Temperature: -40°C ~ 45°C					
Storage Temperature : -40°C ~ 50°C					

V. Thermal Image



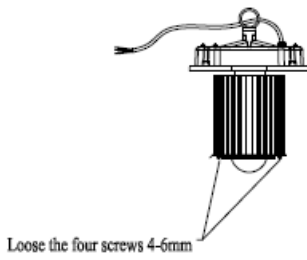
LED High Bay Light - HB3150

VI. Distribution Curve

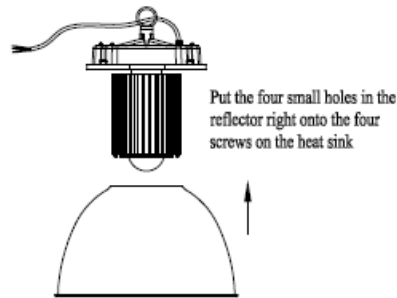


VII. Installation Instruction

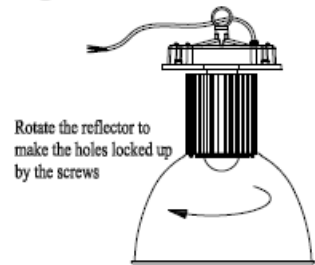
1



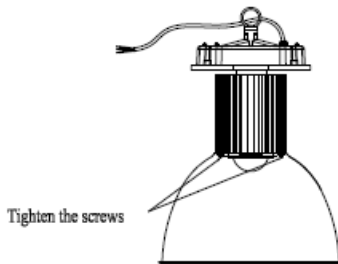
2



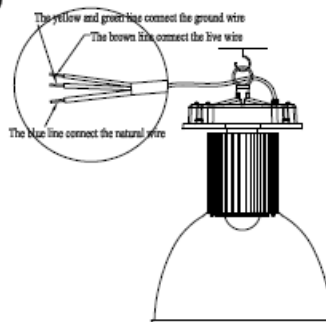
3



4



5



LED High Bay Light - HB3150

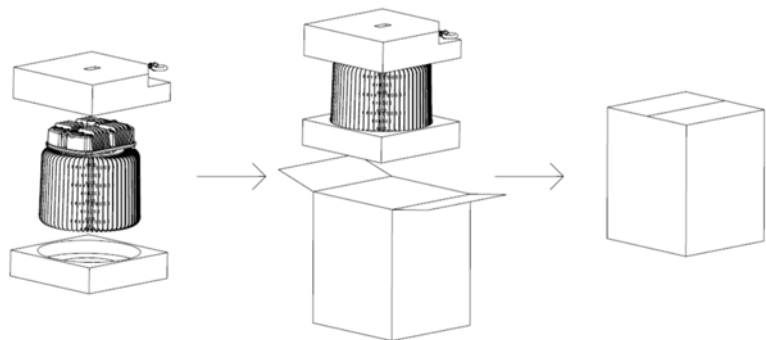
Installation Caution

1. Before maintenance, please ensure the light have been powered off.
2. Make sure the installation position can bear the weight of the luminaire.
3. Clean the lens cover regularly to maintain high transmission of light.
4. Clean up the dust from the reflector and heat sink regularly to keep sound heat dissipation.
5. Don't use water or corrosive solution for cleaning, preferably with a dry cloth.
6. When install or replace power supply, directly open the back cover with a screwdriver, then remove the power supply. There is a three-core cable of AC power, red corre-

VIII. Package

Lamp body

Item	Data
Carton	32*32*41 cm
Quantity	1pcs
N.W	5.3 kg
G.W.	6.3 kg



Reflectors

Item	45°	90°	120°
Carton	45*45*37cm	53*53*37cm	53*53*28cm
Quantity	10 pcs	7 pcs	20 pcs
G.W.	8 kg	6 kg	13 kg

